

August 15, 2003

Case 13

A 20-year-old Thai woman

Chief complaint papule at lower lip 5 years ago

Present illness 5 years ago she developed asymptomatic small papule at lower lip, the lesion gradually enlarged to 1 cm in size

Past history she has no underlying disease, no history of trauma

Family History nil

Physical examination

GA not pale no jaundice

Skin few discrete erythematous asymptomatic papules at lower lip

HEENT nil

Heart-Lungs nil

Abdomen nil

LN no lymphadenopathy



Fig. 1

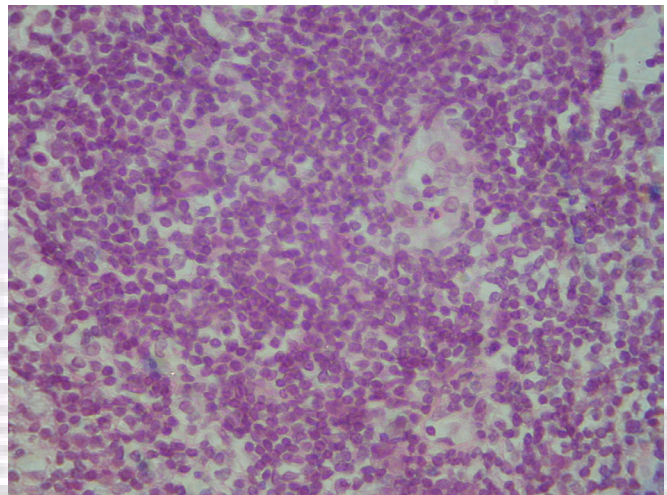


Fig. 2

Histopathology (S02-9053)

- Dense nodular predominantly lymphocytic infiltrates within upper dermis
- A hint of lymphoid follicles
- Mixed population of cells including histiocytes, plasma cells and eosinophils in the infiltrate

Diagnosis Pseudolymphoma

Discussion

Cutaneous pseudolymphoma is a Benign hyperplastic lymphoproliferative reactions that simulate cutaneous malignant lymphomas clinically or histologically. Generally present as multiple cutaneous nodules red-brown or violaceous papules on the head and neck rarely ulcerate or efface the overlying epithelium or adnexae

They are often divided into

- 1) *B-cell pseudolymphomas*
- 2) *T-cell pseudolymphomas*

Presenter Apatorn Siriwattana

Ramathibodi

Consultant Natta Rajathanavin
References

- 1) Ploysangam T, Breneman DL, Mutasim DF. Cutaneous pseudolymphoma. *J Am Acad Dermatol* 1998;38:877-905
- 2) Kalimo K, Rasanen L, Aho H et al. Persistent cutaneous pseudolymphoma after intradermal gold injection. *J Cutan Pathol* 1996;23:328-34
- 3) Burg G, Braun-Falco O. Cutaneous lymphomas, pseudolymphomas, and related disorders. Berlin Springer, 1983

August 15, 2003



Interhospital Dermatology Conference