

Ramathibodi

Case 10

A 10-year-old Thai girl

Chief complaint Solitary ill-defined yellowish patch on lower eyelid since birth

Present Illness Since birth, her mother noticed yellowish patch on her left lower eyelid. The lesion slowly became prominent as she grew up. The patient denied any symptoms but sometimes when the weather is hot she can notice marked erythema of the lesion

Past History: Normal growth development without any underlying diseases

Physical Exam A healthy Thai girl

Skin: Solitary, ill-defined, yellow-brownish, thin plaque on left lower eyelid



Fig. 1

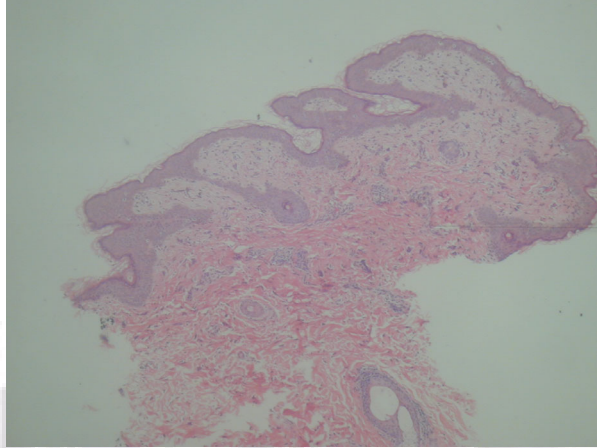


Fig. 2

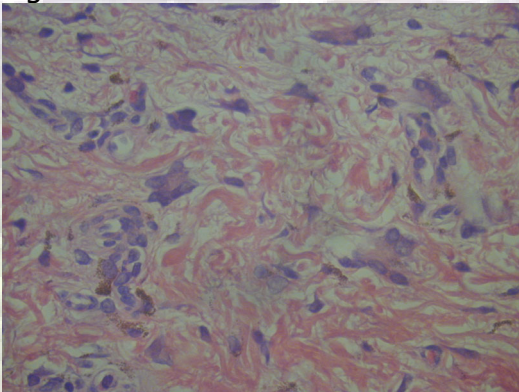


Fig. 3

Histopathology (S03-4833, S03-3233)

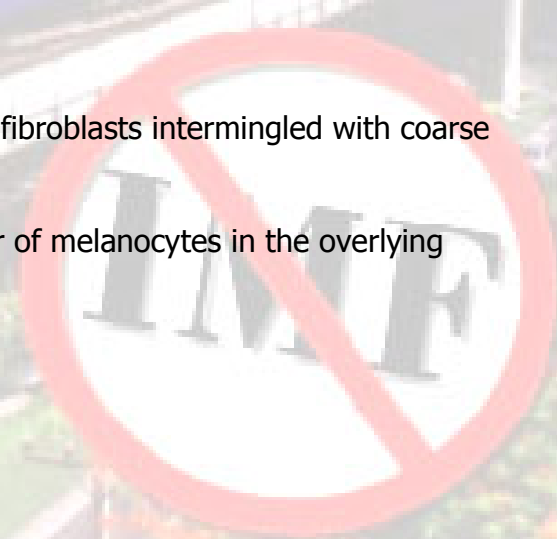
- Scattered multinucleated, plump, and stellate fibroblasts intermingled with coarse collagen in thickened papillary dermis.
- Increased number of blood vessels.
- Numerous melanophages with normal number of melanocytes in the overlying epidermis.

Immuno-histochemistry

Vimentin : positive
S100, Desmin, CD 34, CD 68 : negative

Diagnosis

Case for discussion



Ramathibodi

**Presenter
Consultant**

Prachiya Jewhasuchin
Suthep Jirasutus
Anon Pajitrojana

Hospital

Reference

1. Zelger B. Connective tissue tumors: Recent Results Cancer Res 2002; 160:343-50
2. Chen TM, Purohit SK, Wang AR. Pleomorphic sclerotic fibroma: a case report and literature review: Am J Dermatopathol 2002 Feb;24(1):54-8
3. Nucci MR, Young RH, Fletcher CD. Cellular pseudosarcomatous fibroepithelial stromal polyps of the lower female genital tract: an underrecognized lesion often misdiagnosed as sarcoma: Am J Surg Pathol 2000 Feb;24(2):231-40
4. Williams BT, Barr RJ. Cutaneous pseudosarcomatous polyp: a histological and immunohistochemical study: J Cutan Pathol 1996 Apr;23(2):189-93
5. Cherradi N, Malihy A. Giant cell fibroblastoma recurring as dermatofibrosarcoma. A pediatric case report: Ann Pathol 2002 Dec;22(6):465-8
6. Terrier-Lacombe MJ. Dermatofibrosarcoma protuberans, giant cell fibroblastoma, and hybrid lesions in children: clinicopathologic comparative analysis of 28 cases with molecular data--a study from the French Federation of Cancer Centers Sarcoma Group: Am J Surg Pathol 2003 Jan;27(1):27-39



Interhospital Dermatology Conference