

# Interhospital Dermatology Conference

## Case 17

A - 40 - old women, from Bangkok.

**CC** : Edema at posterior and lateral aspect of neck.

**PI** : 8 months PTA, she presented with edema at posterior neck. The lesion was not tender or itching but slow progression to lateralley.

2 months, The lesion was diagnosed as dermol cyst by physician. The lesion became firm and enlargement.

**PH** : Underlying DM for 5 years. Well controlled with oral antihypoglycemia (glucophage, Daonil)

**FHx** : No contributory

**PE** : Nonpitting, waxy white or shiny symmetrical indurated of wooden - like consistency in apperance of skin on posterior neck.



Fig 17.1

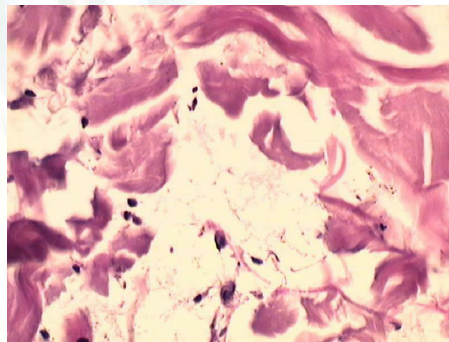


Fig 17.2

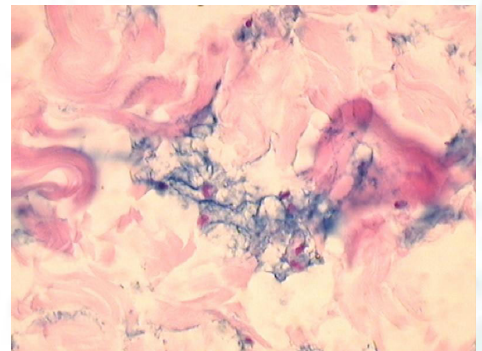


Fig 17.3 Alcian blue stain

**Histopathology** : Slide No. 41 - 0743.

increase number of mucin deposit in the lower reticular dermis.

**Diagnosis** : Scleredema

**Presenter** : Thitima Promsiri, M.D.

**Consultant** : Somsak Tanrattanakorn, M.D.

## Reference

1. Basarab - T, Burrows - NP. Systemic involvement in scleredema of Buschke associated with Ig G - kappa paraproteinaemia. Br J Dermatol 1997 ; 136(6) : 939-42.
2. Vereecken P, Lutz R ; De Dobbelaar G. Nonpitting induration of the back. Scleredema adultorum of Buschke type III. Arch Dermatol 1997 ; 133(5) : 649, 652.

# Interhospital Dermatology Conference

Ramaiahbodi Hospital

August 14, 1996

3. Krasagakis K, Hettmannsperger U. Persistent scleredema of Buschke in a diabetic : improvement with high - doses penicillin. Br J Dermatol 1996 ; 134(3) : 597-8.
4. Mattheou Vakali G, Ioannides D. Cyclosporine in scleredema J Am Acad Dermatol 1996 ; 35 (6) : 990-1.
5. Farrell AM, Branfoot AC, Moss J. Scleredema diabeticorum of Buschke confined to the thighs. Br J Dermatol 1996 ; 134(6) : 113-5.

