

Interhospital Dermatology Conference

Case 12

A 34-year-old Thai male, from Bangkok.

CC :- Multiple dark atrophic scars.

HPI :- The patient presented with multiple black comedones and scattered brownish macules on face and trunk since the age of ten. The initial site of involvement appeared on the face and gradually spread to neck, trunk, armpits and extremities (especially knee, elbow). Pustular lesions are occasionally noted.

PH Nil

FHx as Fig. 12.1

PE Multiple atrophic depression scars and brownish pinpoint macules in pitted scars on face, upper back and elbow. Some blackhead comedones were randomly distributed on the face and back.

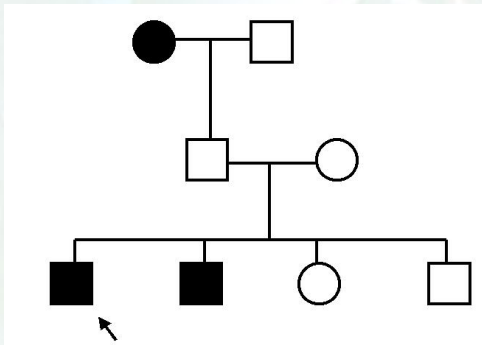


Fig. 12.1



Fig. 12.2

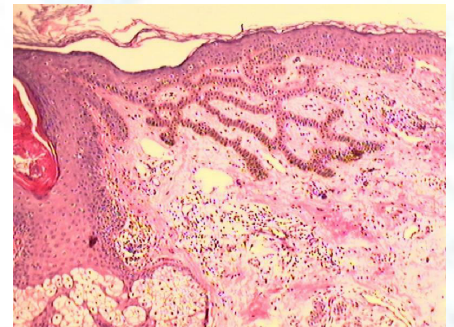


Fig. 12.3

Histopathology : Slide No. 41-1209AB

Atrophic epidermis with pigmentation and reticulation of elongated rete ridge in association with a scar in the reticular dermis.

Diagnosis : Familial comedone

Treatment : Topical Isotretinoin

Presenter : Thitima Promsiri, M.D.

Consultant : Penwadee Timpatanapong, M.D.

Interhospital Dermatology Conference

Reference :

1. Tose M, Candelaria M, Gomez O, Bustamante. Familial Comedone, Arch Dermatol 1978 ; 114 : 1807-9.
2. Rodin HH, Blankenship JL, Berstein G. Diffuse familial Comedones, Arch Dermatol 1967 ; 95 : 145-6.
3. Carneiro SJC, Dickson JE, Knox JM. Familial dyskeratotic Comedone. Arch Dermatol 1972 ; 105 : 249-251.
4. Soo Chan Kim, Won Hyoung Kang. Nevus comedonicus associated with epidermal nevus. J Am Acad Dermatol 1989 ; 21 : 1085 - 8.

Rama
Rama
August, 1998

