



ศูนย์พิษวิทยารามาธิบดี

คณะแพทยศาสตร์โรงพยาบาลรามาธิบดี มหาวิทยาลัยมหิดล

อาคารสุโขทัย ถนนสุโขทัย กรุงเทพมหานคร 10300 สายด่วน 1367 โทรสาร 0-2201-1084

RAMATHIBODI POISON CENTER

Faculty of Medicine Ramathibodi Hospital, Mahidol University

Sukho Place Building, Sukhothai Rd., Bangkok 10300 Hotline 1367

DEFEROXAMINE MESYLATE

If the patient is under 3 years old or 8 kg, please contact Ramathibodi Poison Center (Tel.1367)

Contraindication

- Severe renal disease, anuria
- Deferoxamine allergy

Dosing (maximum 6 g/d)

Loading dose:

5 mg/kg/hr x 15 minutes, then

10 mg/kg/hr x 15 minutes, then

15 mg/kg/hr x 1 hour* (maximum 1000 mg/hr), then

Maintenance dose**: 125 mg/hr

Note: *could extend up to **2-3 hours** if clinically severe

****should not exceed 23 hours** due to risk of pulmonary complication (ARDS), *Yersinia* infection

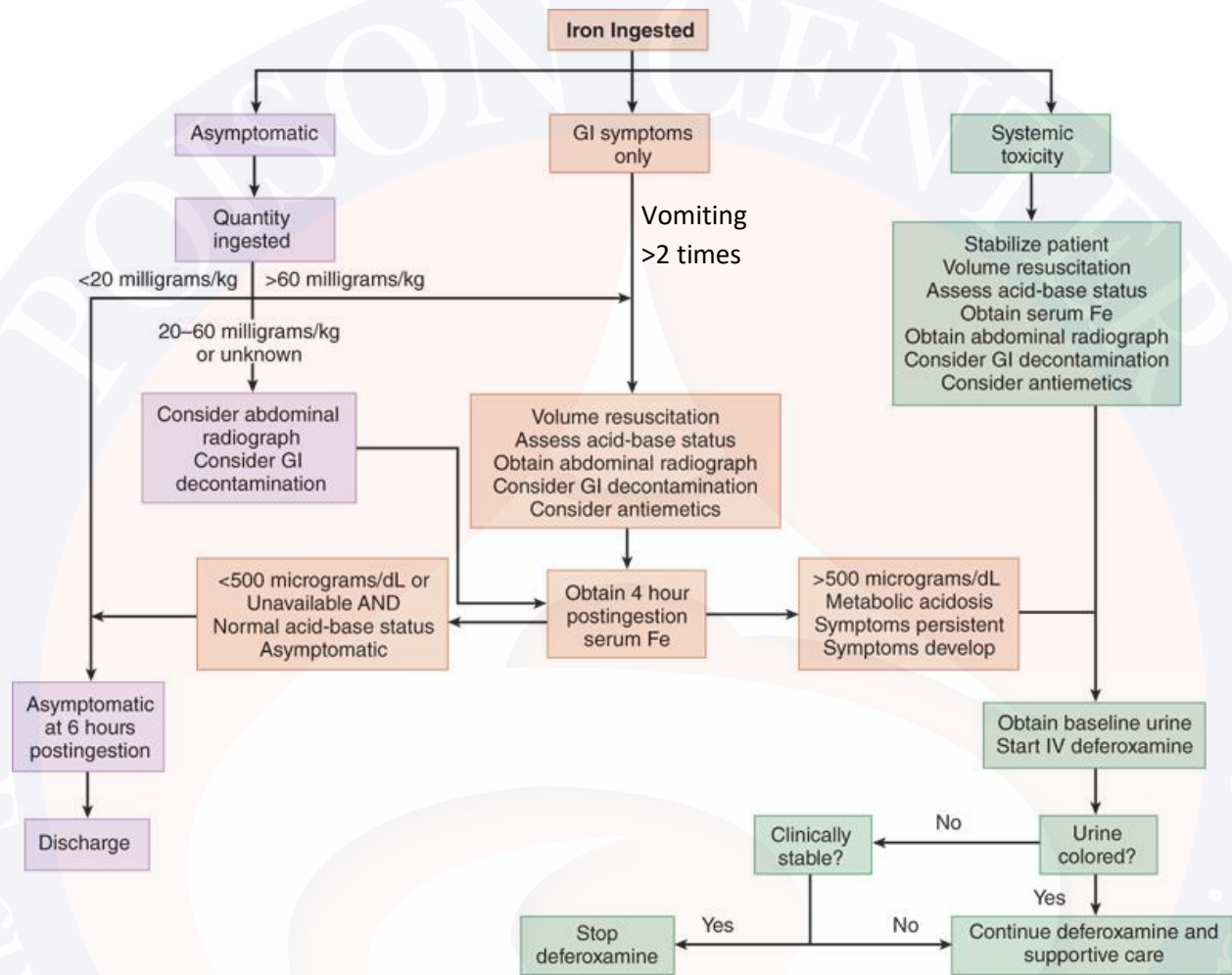
Adverse effects

- Hypotension, shock, tachyarrhythmia (rapid infusion)
- Allergic reaction
- Ototoxicity (frequent)
- Pain at injection site

Infusion endpoint

- Clinically resolved, **and**
- Resolved wide anion gap metabolic acidosis, **and**
- Resolved vin rose urine

Iron ingestion



Source: J.E. Tintinalli, J.S. Stapczynski, O.J. Ma, D.M. Yealy, G.D. Meckler, D.M. Cline:
Tintinalli's Emergency Medicine: A Comprehensive Study Guide, 8th Edition
www.accessmedicine.com
Copyright © McGraw-Hill Education. All rights reserved.

Follow up

- **Lab at admission, and daily:** CBC, LFT, Coag, BUN/Cr, Elyte
- **D1:** f/u Elyte q4-6 h, if worsening of wide-gap metabolic acidosis →

contact RA poison center (1367) for deferoxamine administration