

# Immunogenetics in Systemic Lupus Erythematosus (SLE)

PRAPAPORN PISITKUN , M.D.

DIVISION OF ALLERGY, IMMUNOLOGY AND RHEUMATOLOGY

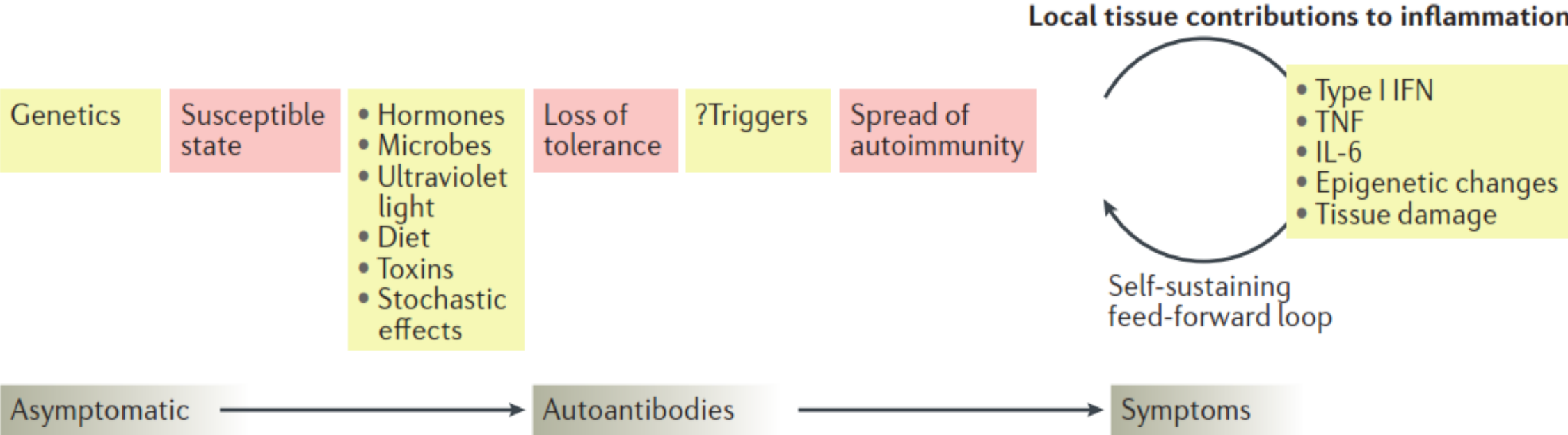
DEPARTMENT OF MEDICINE

FACULTY OF MEDICINE RAMATHIBODI HOSPITAL

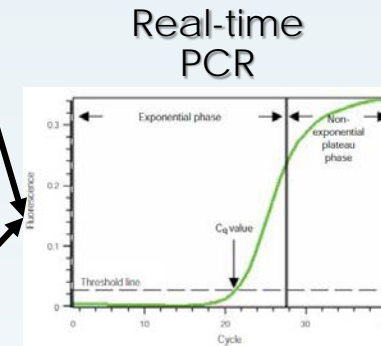
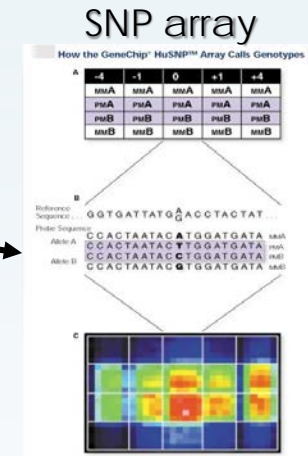
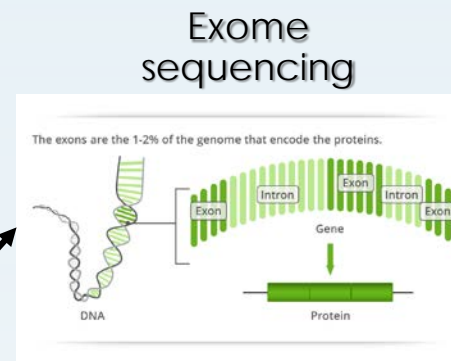
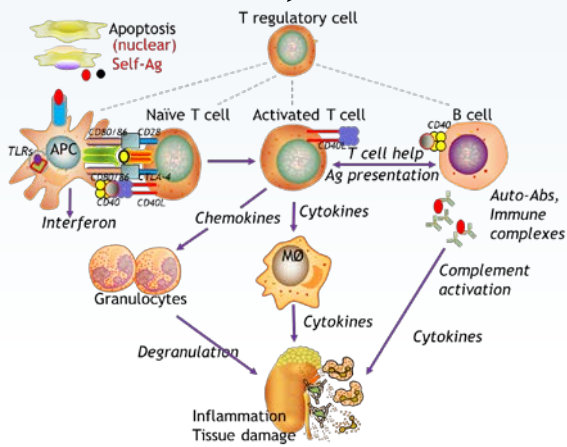
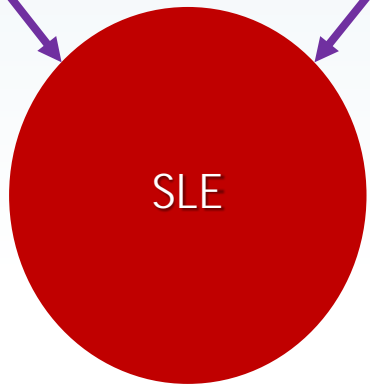
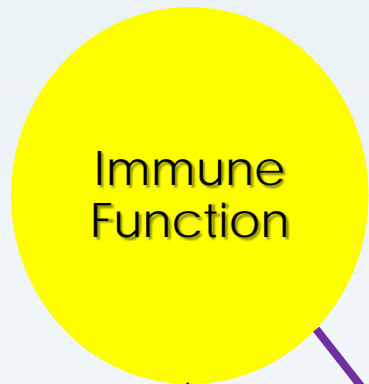
MAHIDOL UNIVERSITY

EMAIL: [PRAPAPORN.PIS@MAHIDOL.AC.TH](mailto:PRAPAPORN.PIS@MAHIDOL.AC.TH)

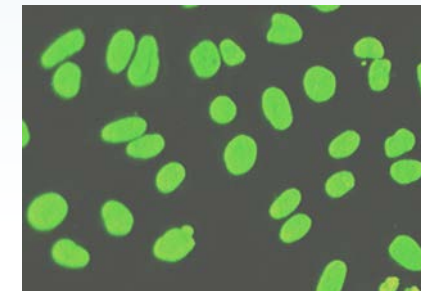
# Stages of SLE Development



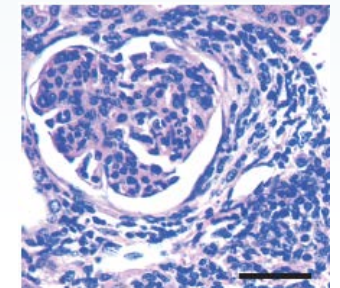
# Scope of Interest Research



Malar rash

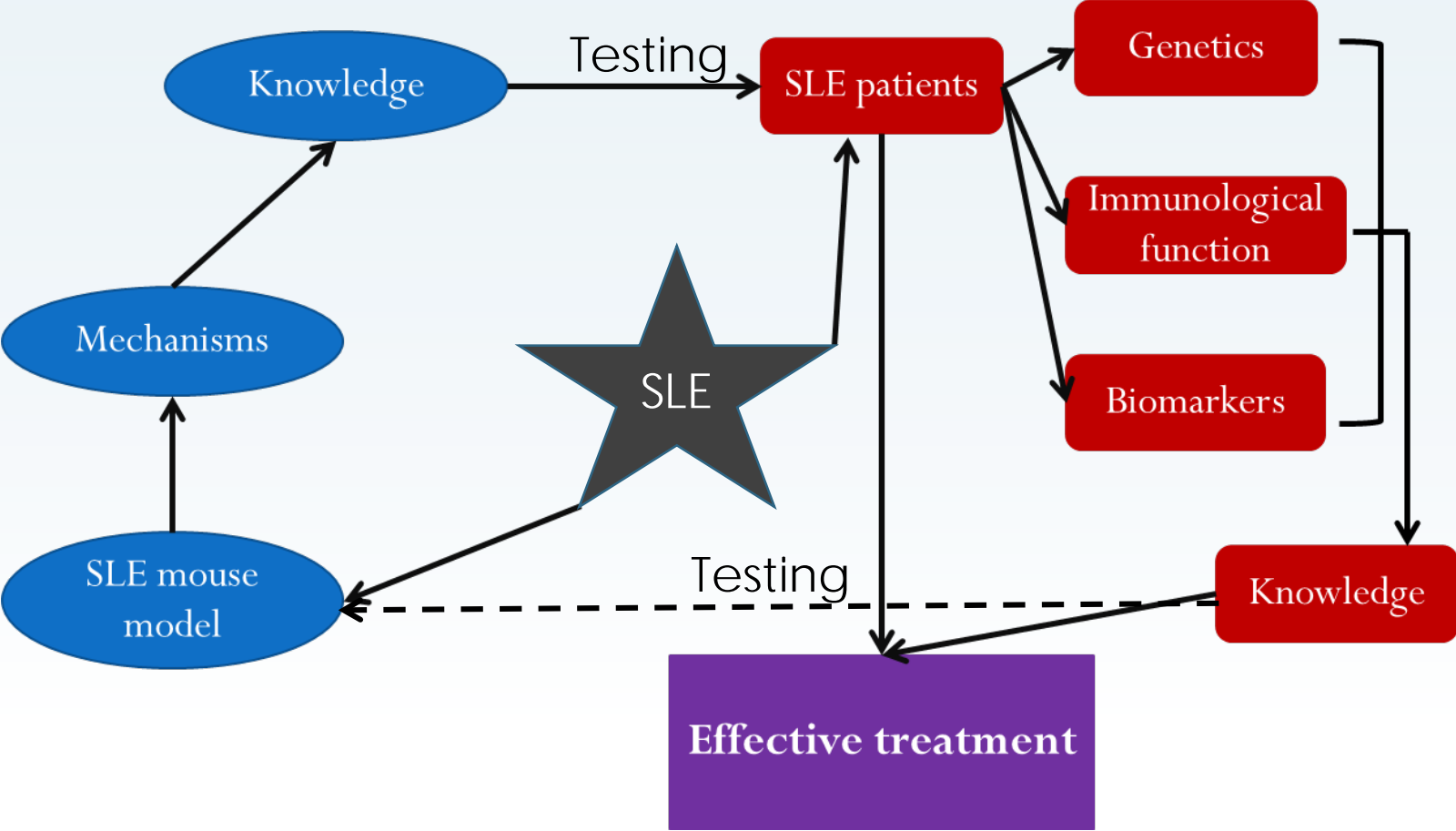


Anti-nuclear Ab (ANA)



Lupus Nephritis

# Work Flow of SLE Research



# Projection of Research Goals

