



Introduction and research highlights

- The Department of Otolaryngology provides intensive care expertise, including diagnosis and treatment for ear, nose and throat problems.
- The common diseases include hearing loss, ear infections, i.e., otitis externa, otitis media, vertigo, allergic rhinitis, sinusitis, tracheostomy, tonsil and thyroid diseases.
- The state-of-the-art involves advanced diagnostic tools and minimally invasive surgery, i.e., microsurgery, endoscopic and robotic surgery.
- As the result of the standard of care and up-to-date knowledge lead to highly productive translational research outcomes.
- The research interests can be divided into three areas:
 - ▷ Ear (Otology and Otoneurology)
 - ▷ Nose (Rhinology, Allergy, Sinus and Skull Base Surgery)
 - ▷ Throat (Larynx, Head and Neck Diseases)



Figure 1. Otolaryngology & posturography

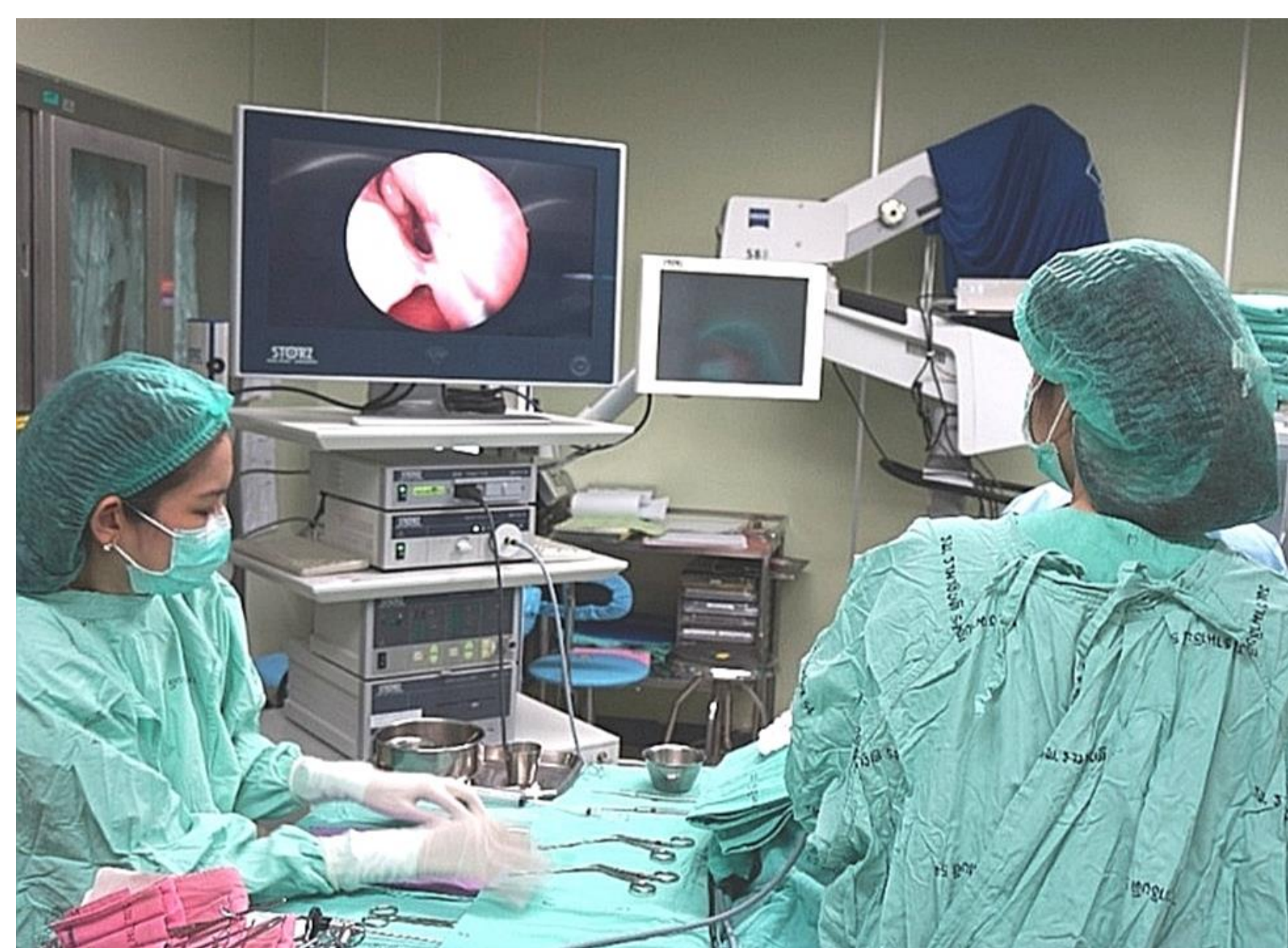


Figure 2. Endoscopic sinus and skull base surgery

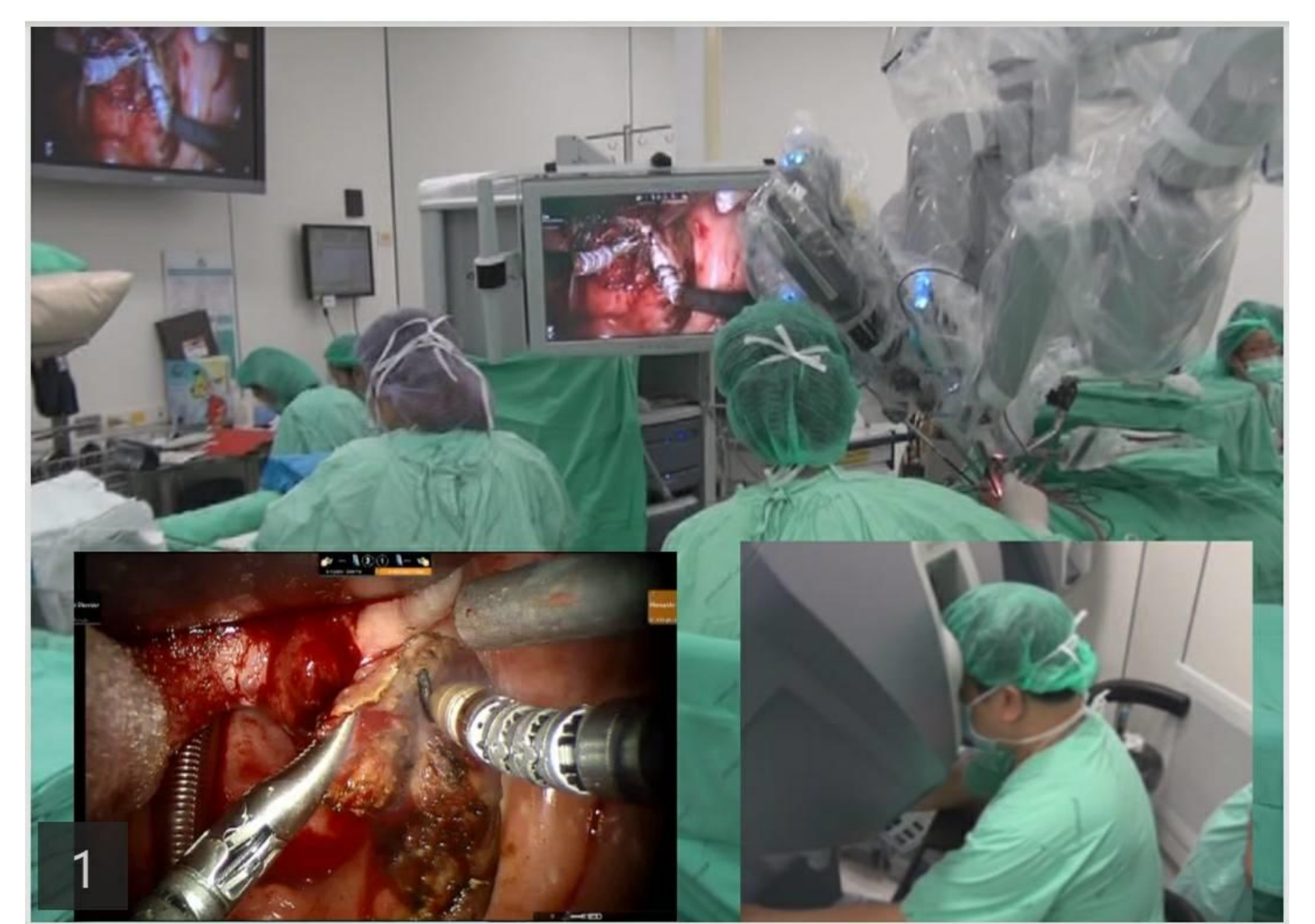


Figure 3. Robotic surgery for oropharyngeal cancer

Research area I

Ear

(Otology and Otoneurology)

The department works on researches about the diagnosis and treatment of hearing loss throughout the auditory pathways, including the external, middle and inner ear diseases. The diagnostic tools comprise the basic to advanced hearing tests and the tubomanometry to evaluate eustachian tube function. The surgery involves myringoplasty, mastoidectomy, middle ear reconstruction and cochlear implant. Furthermore, we also work on the diagnosis, treatment, and rehabilitation of patients who have balance disorder and vertigo problems, i.e., Meniere's disease, BPPV and vestibular neuropathy.

List of research topics/questions

- ▷ Hearing loss
- ▷ Ear infections
- ▷ Tympanoplasty and cochlear implant surgery
- ▷ Vertigo
- ▷ Vestibular rehabilitation

Research area II

Nose

(Rhinology, Allergy, Sinus and Skull Base Surgery)

Common rhinological problems include allergic rhinitis and sinusitis. Our department provides the system available for diagnosis and treatment, i.e., skin prick test and blood test for the allergen to diagnose allergic rhinitis, rhinomanometry, and acoustic rhinometry to evaluate the objective measurement of nasal patency. The treatments of rhinological diseases involve non-surgical and surgical therapy, i.e., immunotherapy and endoscopic septoplasty, turbinate reduction and sinus surgery. Furthermore, as tertiary care, we also have many patients with sinonasal and skull base tumors. Therefore, we develop our skills and knowledge to treat patients with minimally invasive via endoscopic surgery, aiming to improve the quality of life for the patients.

List of research topics/questions

- ▷ Inflammatory diseases; Allergic rhinitis, Sinusitis
- ▷ Structural diseases; deviated nasal septum
- ▷ Sinonasal and skull base tumors

Research area III

Throat

(Larynx, Head and Neck Diseases)

The department provides services for head and neck diseases which the common diseases, including thyroid nodules, chronic tonsillar hypertrophy, head and neck cancer, diseases of voice and swallowing. The advanced diagnostic tools, i.e., fiberoptic laryngoscope, transnasal esophagoscope, stroboscope for evaluation of vocal cord, and advanced surgical techniques, i.e., surgery via microscope and endoscope and robotic surgery, improve the outcome of treatment and patient's quality of life. In addition, the multidisciplinary approach with radiation oncology and oncological medicine can extend the area of research. One of the most common operations for otolaryngologists is tracheostomy which we serve as the consultant for all other departments.

List of research topics/questions

- ▷ Thyroid nodules
- ▷ Disease of tonsils
- ▷ Tracheostomy
- ▷ Head & neck cancer

Contact person



Asst. Prof. Thongchai Bhongmakapat
Department of Otolaryngology
Email: bhongmakapat@yahoo.com
Phone: 02 201 1515



Asst. Prof. Kangsadarn Tanjararak
Department of Otolaryngology
Email: kang006611@outlook.com
Phone: 02 201 1515



Miss Sasiluck Thammasit
Department of Otolaryngology
Email: sasiluck.tha@mahidol.edu
Phone: 02 201 1515