



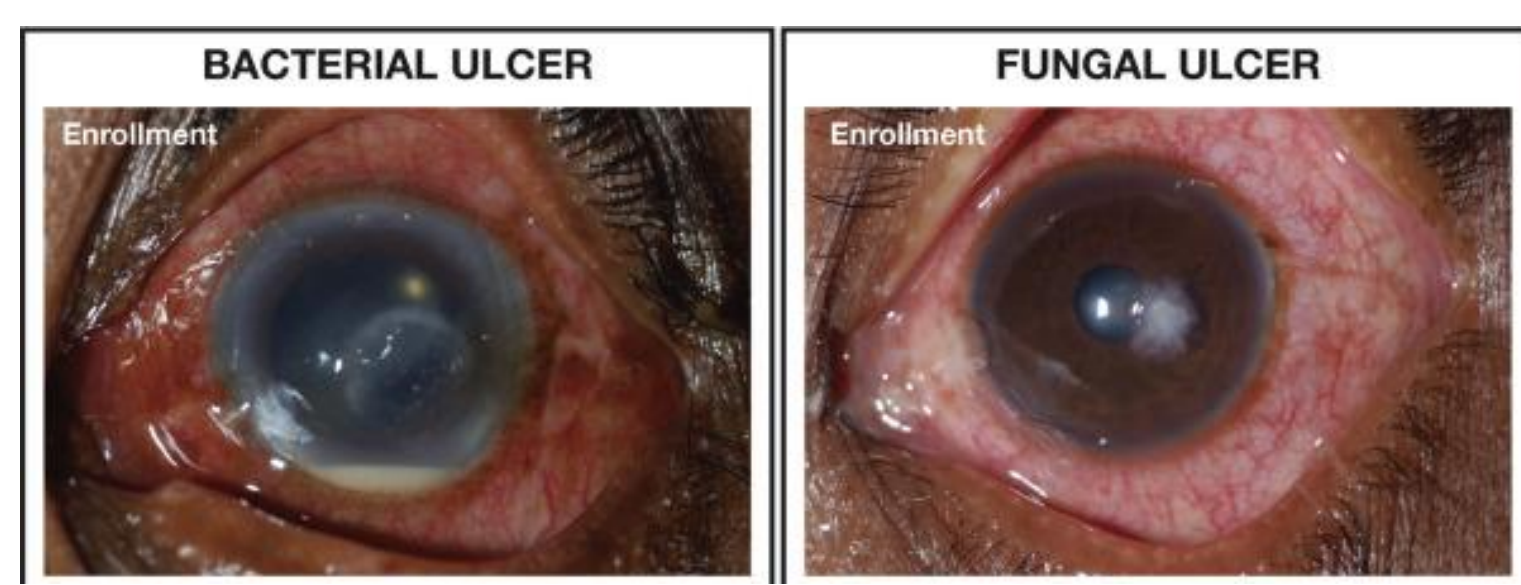
## Projects

### Ongoing research topics of Medical student

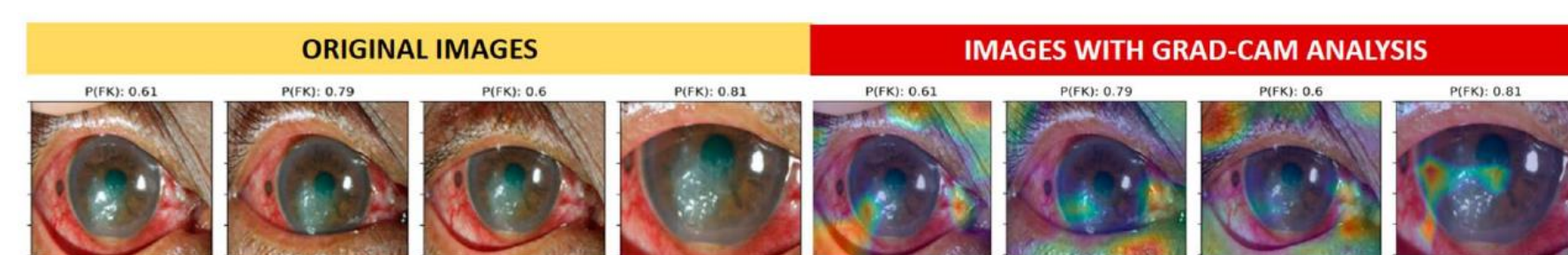
- Use of health websites among Thai patients and their associated validity
- Meta-analysis of tyrosine kinase inhibitors in pediatric leukemia
- Availability and re-use of vessel sealing devices in thyroid surgery in Thailand
- Duration of surgery and operative schedule planning in common ENT procedures
- Prediction of individual follow-up time for BMD using traditional statistics versus machine learning

### Deep Learning for Discrimination Between Fungal Keratitis and Bacterial Keratitis: DeepKeratitis

Amit Kumar Ghosh, MSc,\* Ratchainant Thammasudjarit, PhD,\* Passara Jongkhajornpong, MD,† John Attia, MD, PhD,‡ and Ammarin Thakkinian, PhD\*



Prajna, Namperumalsamy V. et al. American Journal of Ophthalmology, Volume 204, 124 - 129



Misclassification analysis using Grad-CAM in patients with FK.

READ MORE ABOUT THIS ARTICLE

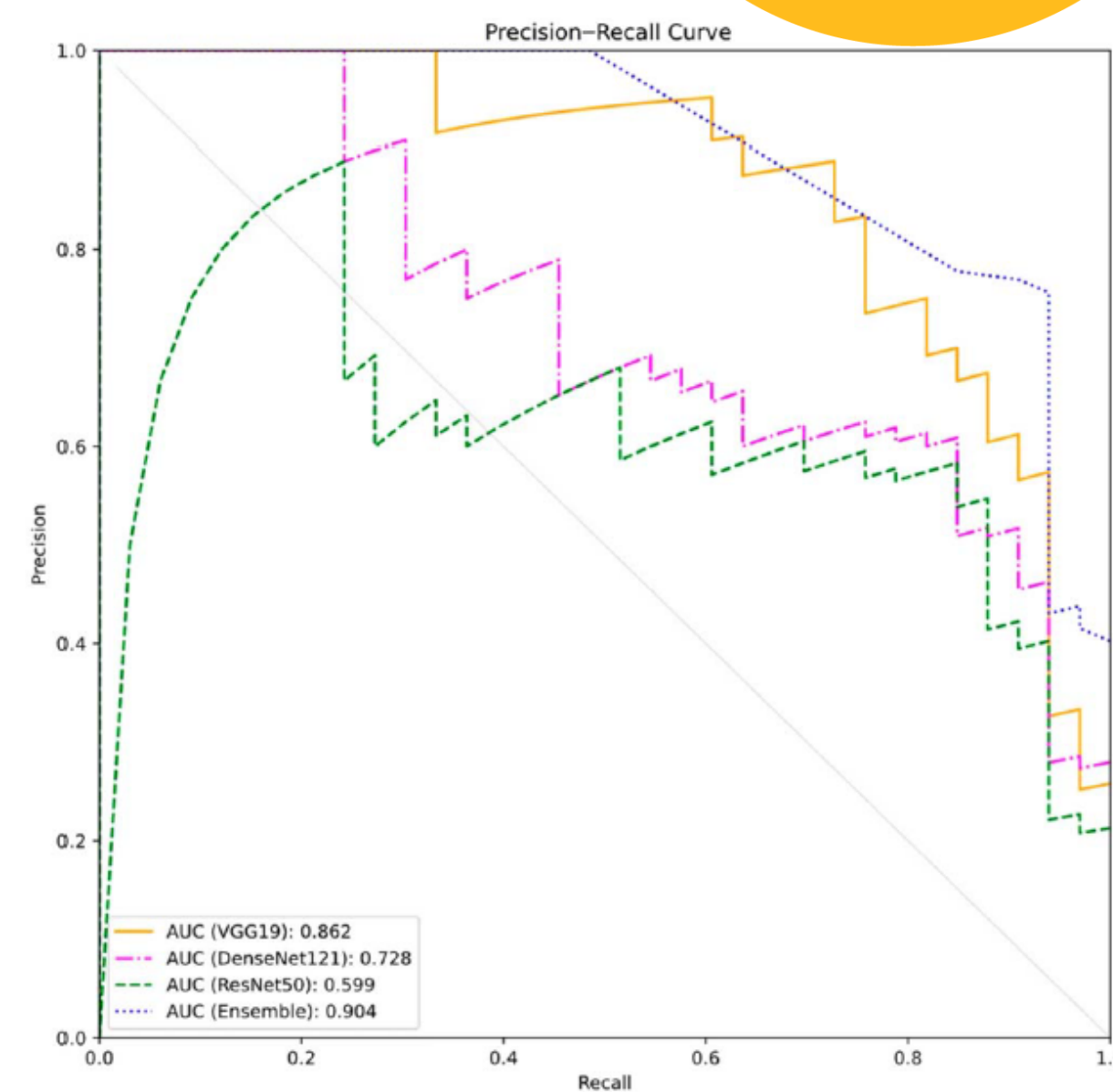


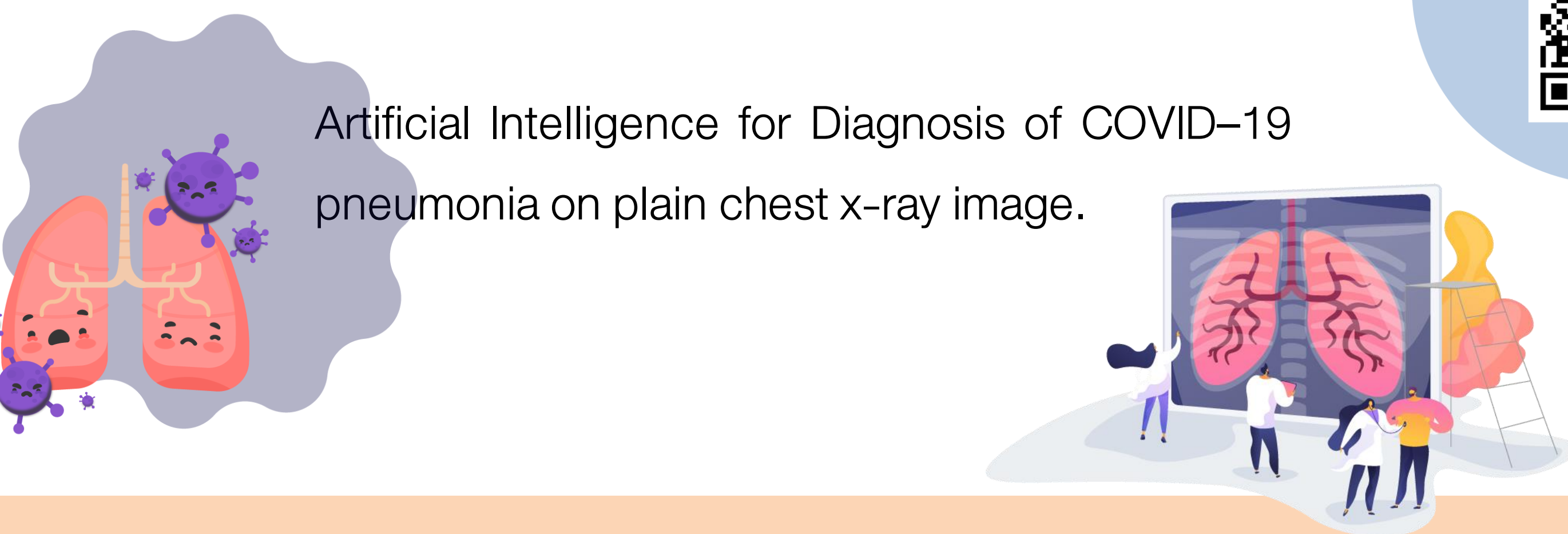
FIGURE 1. Distribution of BK and FK in each data set. (The full color version of this figure is available at www.comeajml.com.)

### RAMAAI ( รามา )

READ MORE ABOUT THIS



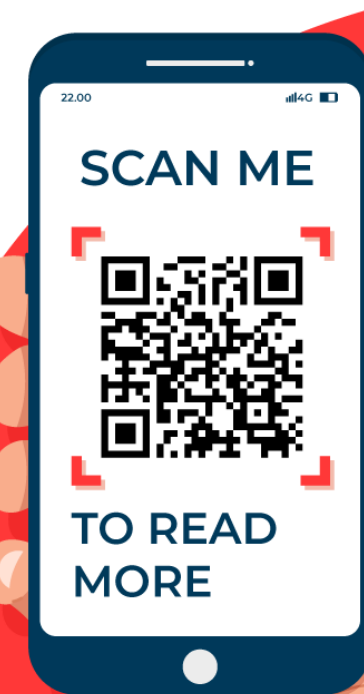
Artificial Intelligence for Diagnosis of COVID-19 pneumonia on plain chest x-ray image.



### Example of our previous works and publications

- Clinical characteristics and risk factors for coronavirus disease 2019 (COVID-19) among patients under investigation in Thailand
- Postoperative hormonal treatment for prevention of endometrioma recurrence after ovarian cystectomy: a systematic review and network meta-analysis
- Efficacy and economic evaluation of delivery of care with tele-continuous EEG in critically ill patients: A multicentre, randomised controlled trial (Tele-cRCT) study protocol
- Effects of handwriting exercise on functional outcome in Parkinson disease: A randomized controlled trial

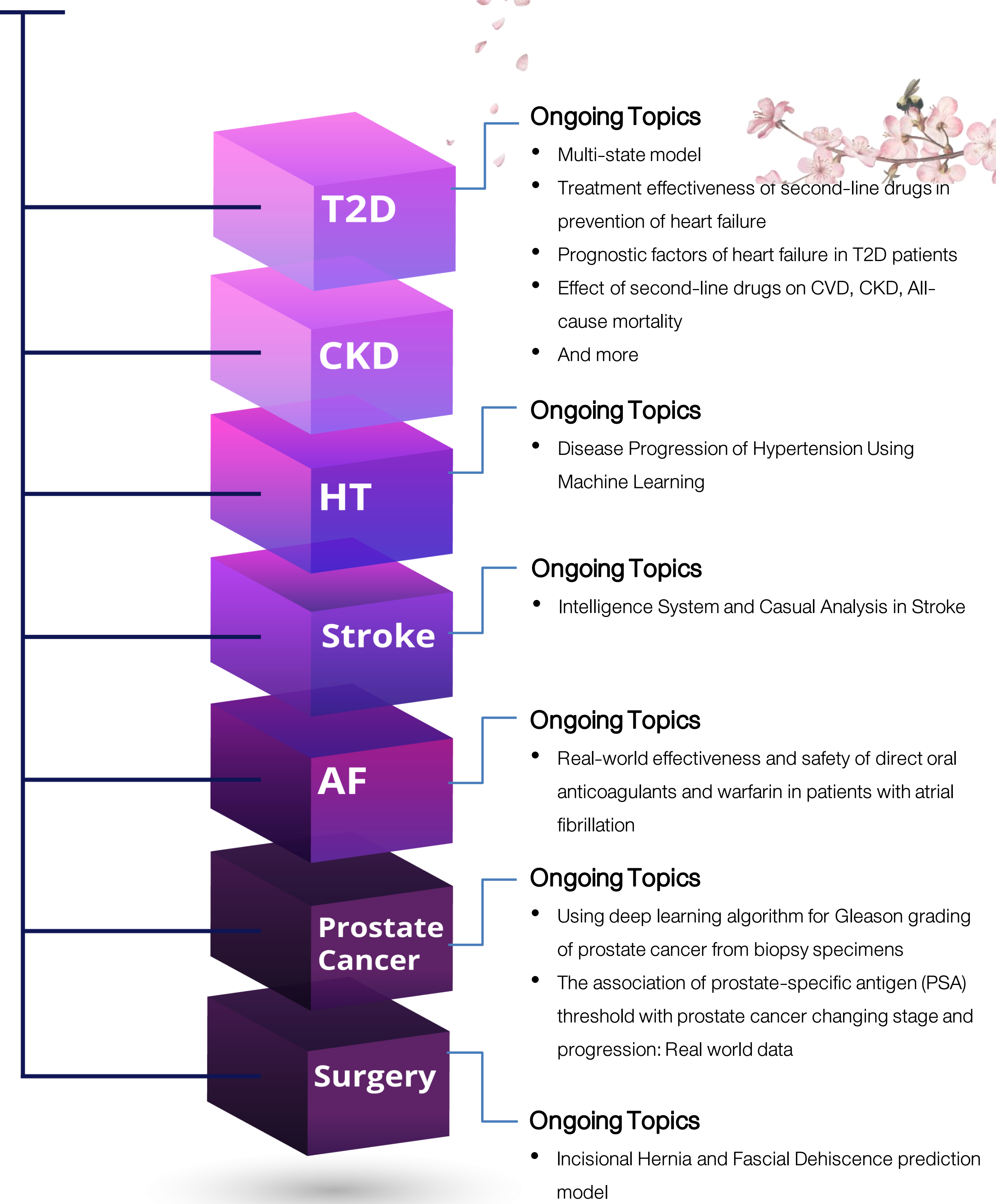
SCAN ME TO READ MORE



## Data Warehouse

- **Data warehouses** for non-communicable diseases (NCDs) from Ramathibodi hospital information system focusing on metabolic syndrome, atherosclerosis, cancer and surgery including type 2 diabetes (T2D), hypertension (HT), chronic kidney disease (CKD), cardiovascular disease (CVDs), atrial fibrillation (AF), stroke, prostate cancer and surgery were constructed and updated from 2010 to 2020.

## CEB Data Warehouse



SCAN ME to read more



### Research Area I



#### Specialty

- Clinical Epidemiology
- Otolaryngology

#### Contact Person

Asst. Prof. Pawin Numthavaj, M.D., Ph.D.  
pawin.num@mahidol.ac.th

### Research Area II



#### Data Warehouse

- Prostate cancer
- #### Interested Topics
- Data science for healthcare
  - Nuclear medicine and Radiology

#### Contact Person

Dr. Chaiyawat Suppasilp, M.D.  
chaiyawat.sup@mahidol.edu

### Research Area III



#### Data Warehouse

- Stroke
  - AF
- #### Interested Topics
- Data science for healthcare
  - Neurological Surgery

#### Contact Person

Dr. Sermkiat Lolak, M.D.  
sermkiat.lol@mahidol.edu