

London School of Hygiene & Tropical Medicine

Improving Health Worldwide

www.lshtm.ac.uk/

LONDON
SCHOOL of
HYGIENE
& TROPICAL
MEDICINE



About LSHTM

- Part of the University of London, LSHTM is a world-leading institution specialising in **public health, global health, and tropical medicine** since its founding in 1899.
- Known globally for its impactful research and high-quality programmes, including **Master's, Doctoral, and Distance Learning** options.
- LSHTM has a diverse community with over **4,500 students** (700 Msc student per year) and a network of **35,500** alumni in **over 190 countries**, working to improve health outcomes globally.
- Collaborates closely with **international health ministries, NGOs, and research institutions** to tackle global health challenges.



To **improve health and health equity in the UK and worldwide**; working in partnership to achieve excellence in public and global health research, education and translation of knowledge into policy and practice.

4,500 3,500

students

staff including at MRC
Units in The Gambia
and Uganda

LSHTM Rankings



2

in the world for public health (1 in the UK)
(Shanghai Ranking's Global Ranking of Academic Subjects 2024)



4

in the world for infectious diseases
(US News Best Global Universities Ranking 2022)



1

in the UK for the proportion of academic research
with women authors, for publishing open access
research, and for collaboration

(CWTS Leiden Ranking 2024, All Sciences)



11

in the world for social sciences & public health
(US News Best Global Universities Ranking 2022)



2

in the world for public, environmental
& occupational health

(US News Best Global Universities Ranking 2022)



- Queen's Anniversary Prize for Higher and Further Education 2021 awarded for response to COVID-19
- Times Higher Education's University of the Year 2016 and Queen's Anniversary Prize for Higher and Further Education 2017 both awarded for response to Ebola crisis in West Africa

Location

- Located in the **heart of Bloomsbury**, London's academic and cultural district, close to major universities, libraries, and research institutions.
- Near **iconic institutions** such as the British Museum, The British Library, and the Senate House Library.
- Easily accessible by **public transport**, including several nearby Underground stations (Russell Square, Goodge Street, and Euston) and major rail hubs (King's Cross, St Pancras).
- Has been named the world's **best student city** for the sixth consecutive year (QS Ranking), London is a global hub for **culture, politics, and health innovation**, offering students unique opportunities for professional growth and networking.



Master's degrees

Specialised programmes
recognised worldwide

LONDON
SCHOOL of
HYGIENE
& TROPICAL
MEDICINE



Intercalating a master's at LSHTM

Key Information

Duration: 1 academic year (September-September)

Eligibility: Open to medical students after at least 3 years of study (or after 2nd year with a condensed MBBS)

Application process & deadline: Same as for non-intercalating students

Benefits of Intercalation at LSHTM

- Develop specialised research knowledge in global health, complementing the medical training
- Build international networks with leading experts
- Gain a competitive edge in a clinical environment
- Enhance your CV for future specialisation applications

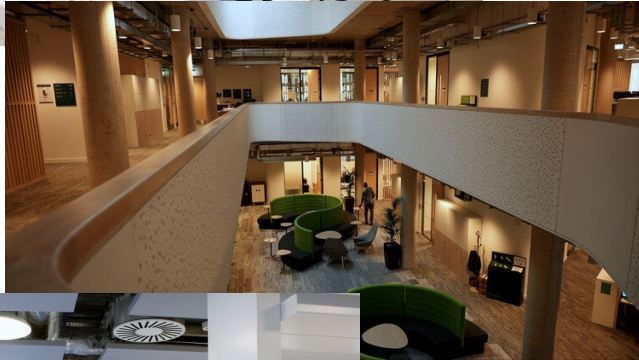


"Doing my MSc at LSHTM has been one of the best years of my life. The course was challenging but ultimately very well suited to my interests as a medical student."

Mary, Canada
Intercalating student - MSc Medical Microbiology



Structure of the Academic Year



- **Start Date:**

All intensive Master's programmes begin in late September.

- **Orientation** in the first week:

- ✓ Introduction to studying at LSHTM
- ✓ Key study skills and academic expectations

- **Autumn Term (Core Modules):**

Focus on core material relevant to the programme.

- **Spring and Summer Terms (Core & Elective Modules):**

- ✓ Combination of core and elective modules
- ✓ Students can choose from a wide range of elective options

- **Project Report (July - September):**

Students work independently on their project reports during the summer months.

The project allows for in-depth research on a topic related to their programme.

Entry Requirements

You will need the equivalent of a Bachelor's degree to undertake e.g.

UK Lower Second Class Honours (2:2)	UK Upper Second Class Honours (2:1)
MSc Climate Change & Planetary Health	MSc Epidemiology **
MSc Control of Infectious Diseases	MSc Public Health ***

** Those with a 2:2 degree will also be considered if they have at least one year of relevant professional experience or sufficient postgraduate training in epidemiology.

*** Applicants with a 2:2 degree will be considered if they have at least two years of relevant professional experience or training in a field related to public health.

Country	UK Lower Second Class Honours (2:2)	UK Upper Second Class Honours (2:1)
Thailand	Bachelor degree with an overall GPA 3.0/4.0	Bachelor degree with an overall GPA 3.3/4.0
Hong Kong	Bachelor degree with Second Class (Lower Division) honours with an overall GPA 3.0/4.0	Bachelor degree with Second Class (Upper Division) honours with an overall GPA 3.3/4.0

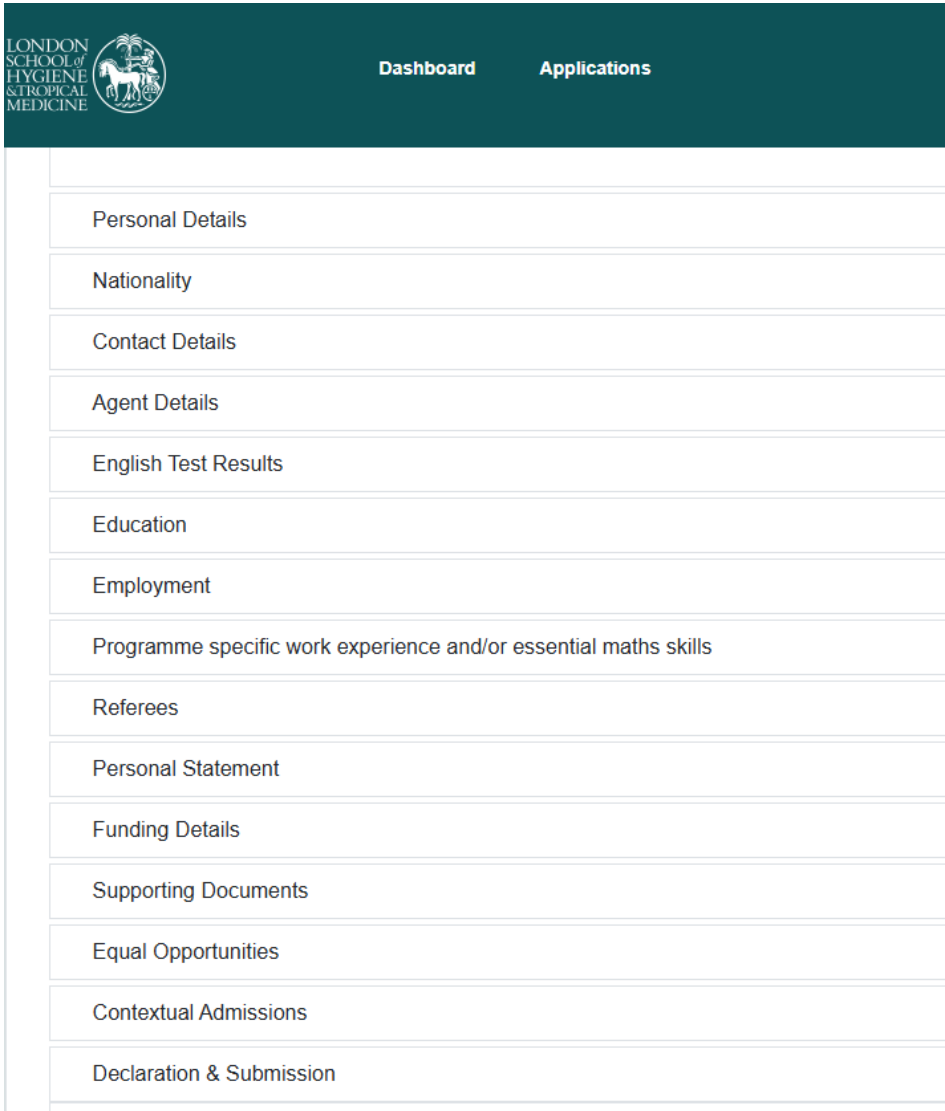
English Language Requirements

Non-UK and Irish nationals must meet English language requirements to be granted a Student visa and study in the UK.

Programme	English Band
MSc Climate Change & Planetary Health	Band B
MSc Control of Infectious Diseases	Band B
MSc Epidemiology	Band A
MSc Public Health	Band A

Test	Band A	Band B
IELTS (Academic)	7.5 overall with 7.0 in each component	7.0 overall with 6.5 in each component
Pearson PTE Academic	80 overall with 80 in each component	76 overall with 76 in each component
LanguageCert Academic SELT	80 overall with 75 in each component	75 overall with 70 in each component
Trinity College London Integrated Skills in English - ISE III	Level III with: Merit in two components, Pass in two components	Level III with: Pass in each component

Applicant Portal – Getting Started



The screenshot shows the Applicant Portal dashboard. At the top, there is a dark blue header with the London School of Hygiene & Tropical Medicine logo on the left and two navigation tabs: 'Dashboard' and 'Applications'. Below the header is a vertical sidebar on the left containing a list of application sections: Personal Details, Nationality, Contact Details, Agent Details, English Test Results, Education, Employment, Programme specific work experience and/or essential maths skills, Referees, Personal Statement, Funding Details, Supporting Documents, Equal Opportunities, Contextual Admissions, and Declaration & Submission. The main content area to the right of the sidebar is currently empty.

All applications must be submitted via [the Online Applicant Portal](#).

Information required to apply:

- Your full contact details
- Your qualification details
- Your employment details
- Your referees' details

Documents that need to be uploaded electronically:

- A valid passport copy (photo page) or EU National ID card (mandatory)
- Your personal statement (mandatory)
- Curriculum Vitae/Resumé (mandatory)
- Transcripts (mandatory)
- A valid passport copy (mandatory)
- Degree certificates
- Relevant professional qualifications
- Evidence of English language ability (if available)

Application fee:

- A £50 application fee is payable for all MSc applications

Applicant Portal – Personal Statement

Your personal statement is an important part of your application. It is your opportunity to create a unique picture of who you are and why you'll be successful in your chosen course of study.

Before writing your personal statement, we encourage you to carefully read the entry requirements for your chosen programme(s). Where the programme requires numeracy skills and/or desirable professional experience, please be sure to state how you meet this requirement in your statement and in the relevant sections of the application form.

Please answer each question carefully demonstrating your passion for your chosen subject area, why the programme is suitable for you and how it fits into your career plans (200 words maximum per question):

- Please tell us why you have chosen to apply for this particular programme, **what specifically motivates you about this subject?**
- Please tell us **how your qualifications and studies to date have helped you to prepare for this programme**
- Please tell us how your chosen field of study **fits into your career objectives**
- Please tell us **what else you have done outside of education to prepare for your study** and why these experiences are useful/relevant.

We are particularly interested to hear about any **relevant work experience** or your achievements. This response will not be scored but will be taken into consideration when the assessor makes a decision on your application.

Finally, your personal statement should be personal to you and written by you. It is an opportunity to showcase your skills, ambitions and experiences in your own voice, which is what our academic colleagues are most interested in. The use of any AI tools are not permitted.

Please note, you can only submit one personal statement. If you are applying for two programmes, please ensure that the statement covers both choices.

MSc Climate Change & Planetary Health

We're all familiar with news stories of wildfires, flooding, diseases. Understanding the connection between planetary and human health is vital if we want to change the trajectory and create a liveable planet for future generations.

Join us to unravel the impact of climate change on diverse populations around the world and analyse how our behaviour influences the planet. You'll build confidence in assessing links, anticipating problems, finding solutions and intervening early. You'll develop specialist skills to become an agent of change. Ready to work towards a sustainable planet and healthy population?

Who is it for?

This course is suitable for a wide range of academics and professionals. That means you'll have opportunities to work alongside students from all sorts of related fields.

You should be keen to understand the complex systems that link the environment and human health, and motivated to pursue a career in planetary health. You'll also need some mathematical background, as parts of the programme are more focused on quantitative assessment.

What you will learn

- Find out how global environmental systems (such as heat stress, food systems, air pollution, and biodiversity loss) affect human health
- Interpret studies to make informed decisions and understand theoretical underpinnings so you can turn evidence into action
- Apply and evaluate methods to quantify the impact of climate change on health, policies and practices
- Learn to co-develop solutions and engage with a large range of audiences to bring about change
- Discover how to promote and support population health in a sustainable way



Entry Requirements

UK Second Class honours degree (2:2, 50%) or equivalent

Additional requirement:

Applicants for the MSc Climate Change and Planetary Health will need to provide some evidence of ability in mathematics, post-16 year education. This could include:

- A-level or a higher school certificate
- a module within an undergraduate degree (such as quantitative methods, epidemiology or statistics)
- mathematics (including statistics) studied as part of a general research methods course

MSc Control of Infection Diseases

Rapid global spread, emerging variants, overwhelmed healthcare systems – these are just some of the devastating consequences an infectious disease can have. As a specialist in this field, you'll help shape the global health landscape, investigating and managing infectious diseases.

You'll develop specialist skills and bridge the fields of epidemiology, laboratory sciences and public health. If you want to influence research, policy and control, this truly multi-disciplinary programme is the perfect match for you.

Who is it for?

Biological science graduates and scientists. Medical graduates and intercalating medical students, veterinarians, retraining NGO employees. However, we also accept some students who aspire to a new career in controlling infectious diseases.

The programme attracts applications from all over the world. Whatever your background, you'll show a keen interest in infectious diseases and a desire to have influence in the field. You will study alongside a broad range of professionals from across the globe.

By the end of the course, you'll be equipped with new specialist skills, and be prepared for a career in the control of infectious diseases. Past students are working across the world for a range of organisations, often in influential positions.

What you will learn

- Grow critical knowledge in global health and infectious diseases, including investigating the transmission of endemic and epidemic infections
- Understand how to select appropriate methods of control, as well as designing, implementing and evaluating co-ordinated control programmes
- Discover the best ways to assess the constraints of local public health delivery systems
- Develop the skills to manage available resources in the context of the control of infectious diseases
- Explore the impact on particular geographical regions or specific diseases.



Entry Requirements

UK Second Class honours degree (2:2, 50%) or equivalent

Additionally for the MSc Control of Infectious Diseases, some prior public health/overseas experience is advantageous and will be considered but is not necessarily a prerequisite for this course.

MSc Epidemiology

Pandemics. Vaccines. Cancer. Cardiovascular diseases. Epidemiology is about tackling today's issues in public health and healthcare – understanding the determinants of health, evaluating interventions, and supporting the control and prevention of diseases. It's a discipline that has saved millions of lives globally.

Studying our MSc in Epidemiology, you'll be equipped with a toolbox to help you investigate both infectious and non-communicable diseases. You'll learn how to design studies, apply statistical analysis methods, and interpret results. By the end of the course, you will be able to make valuable contributions to medical research and public health worldwide.

What you will learn

- Understand the role of epidemiology and its contribution to other health-related disciplines
- Learn how to choose appropriate designs and develop detailed protocols for epidemiological studies
- Discover how to manage clinical health data, carry out appropriate statistical analysis, and rigorously assess results of studies
- Investigate the causes of specific health conditions and predict future disease patterns
- How to interpret and understand research findings in a broader policy context You'll be taught by research-active staff with a very broad range of expertise – from infectious disease outbreaks to cancer survival. Not only will you interact with closely and learn from practising epidemiologists, you'll also benefit from our links with industry and organisations such as the World Health Organization and UK Health Security Agency.

Who is it for?

Students come from a diverse range of backgrounds, both geographically and experientially. You could be a medic, a graduate of life sciences or mathematics, or from a completely different background – with relevant work experience – looking for a change in career.

The course is ideal if you have a genuine passion for studying the causes of diseases, adverse health effects or the effectiveness of health interventions. You'll need an interest in studying alongside others with a broad range of global experiences, and a good level of mathematical competence at A Level standard or above.



Entry Requirements

UK Second Class honours degree (2:1, 60%) or equivalent

Additional requirements for the MSc Epidemiology are:

- evidence of numeracy skills (e.g. A level Mathematics or Statistics or a module with strong quantitative components with a good mark in their university degree)
- it is preferable for a student to have some work experience in a health-related field

Applicants who do not meet the minimum entry requirement, but who have relevant professional experience may still be eligible for admission. Qualifications and experience will be assessed from the application.

MSc Public Health

In these rapidly changing times, preventing disease, improving our health, and reducing health inequality will depend on a broad range of people and expertise. Our MSc in Public Health reflects this, offering an unparalleled number of specialised modules designed to help you become a catalyst for change in your area of interest.

Who is it for?

Perhaps you're already working in public health and need to strengthen your epidemiology skills to get to the next stage of your career. Maybe you've been working in an underfunded health service and want to move into policy where you can better drive the changes needed. Or maybe you've witnessed the rise in preventable illnesses and you're keen to progress to a position where you can serve the population more effectively.

What you will learn

- Gain a comprehensive understanding of the wider determinants of health and the breadth of factors that undermine its foundation
- Develop critical thinking skills to confidently analyse evidence, question assumptions, and shape innovative approaches
- Learn how to systematically approach problems and navigate through possible solutions and theories with assurance

Specialised streams

After a series of compulsory core modules, students can choose to focus on a specialised stream of study or remain on the core public health programme. On successful completion of the programme, students will receive a Master's degree in Public Health. This will reflect their choice of stream:

- [Health Economics](#)
- [Health Promotion](#)
- [Health Services Management](#)
- [Health Services Research](#)



Entry Requirements

UK Second Class honours degree (2:1, 60%) or equivalent

Applicants with relevant work experience will be given preference. This includes both paid and voluntary work, internships etc.

Applicants will need to provide some evidence of ability in mathematics, post-16 year education. This could include:

- "A" level or a higher school certificate
- a module within an undergraduate degree (such as quantitative methods, epidemiology or statistics)
- statistics studied as part of a general research methods course
- an online biostatistics short course

Student Life & Support

Improving Health Worldwide

LONDON
SCHOOL of
HYGIENE
& TROPICAL
MEDICINE



Accommodation

Student Halls of Residence

- [University of London Intercollegiate Halls](#) (with LSHTM-allocated rooms within walking distance)
 - ✓ 44 rooms, Full-time LSHTM offer holders (priority to unconditional offers)
 - ✓ 40 or 50 weeks from mid-September
 - ✓ Opens: **14 April** / Deadlines: **2 June** & **14 July**
- **University of London managed properties**
 - ✓ [Gower Street apartments](#) (closer but more expensive)

Private Housing

- [Independent halls](#)
 - ✓ Luxury halls / Charity halls
 - Students rent a room in shared housing or an entire property.
 - LSHTM supports students via [ULHS](#) for housing help and contract advice.

For more information:



Student Support

Counselling and Mental Health Support

- Talk to a professional in-person, online, or by phone. Sessions are completely private and here to support you.
- Learn practical ways to manage stress, build resilience, and take care of your mental health.
- Join Togetherall, an anonymous peer support community where you can connect with others anytime. If needed, our counsellors can also help you access external services.

Disability Support

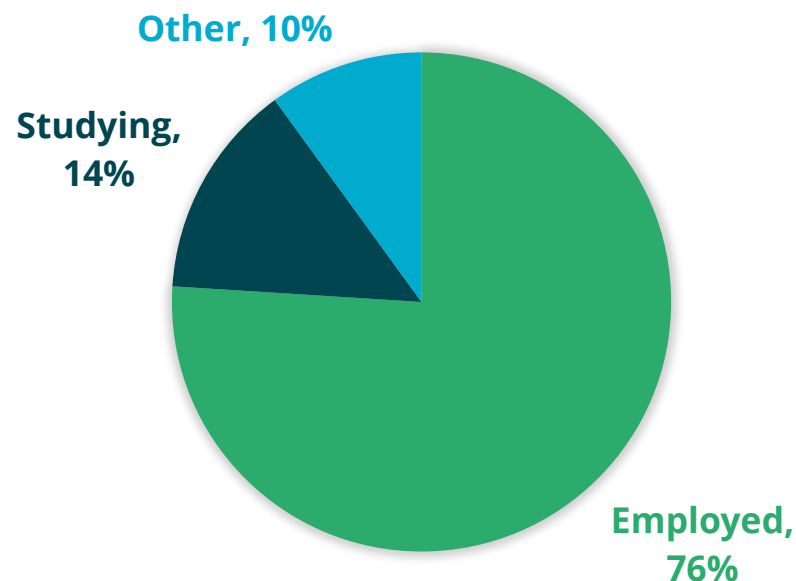
- Confidential adjustments for disabilities, including mental health and learning difficulties, to ensure access to learning and assessments.
- Access assistive technology, study adjustments, and physical access support.
- Your point of contact for tailored guidance and personalised support plans.

Every student at LSHTM has a personal tutor who's there to help you navigate your studies, academic challenges, and personal development. Whether you need guidance on coursework, research, or settling into student life, they're here to support you!



Career Opportunities

EMPLOYABILITY

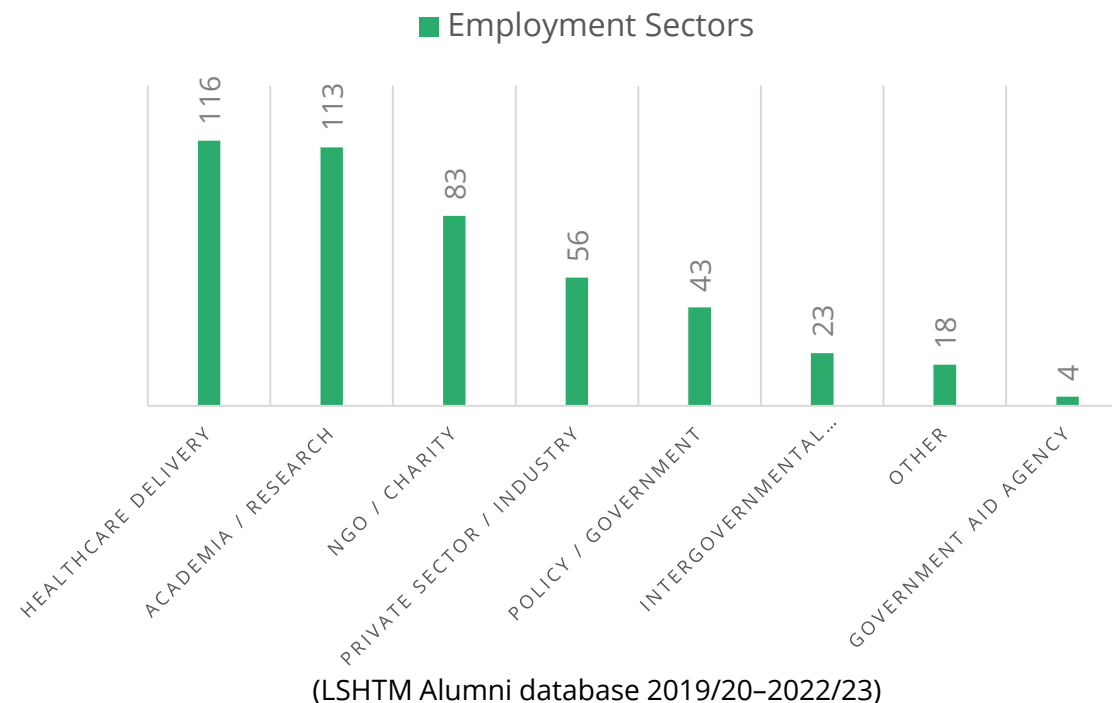


(Graduate Outcomes Survey 2019/20–2022/23, in-person programmes)

Top Employers

NHS · LSHTM · World Health Organization · Médecins Sans Frontières (MSF) · Ministry of Health · United Nations · MRC Unit · Imperial College London · Clinton Health Access Initiative · IQVIA · UKHSA

EMPLOYMENT SECTORS



Sample Job Titles

Clinical Researcher · Doctor · Epidemiologist · Eye Care Specialist · Healthcare Scientist · Nurse · Nutritionist · Pharmacist · Policy Officer · Programme Manager · Public Health Registrar · Research Fellow

Connect to Our Students



Curious about life at LSHTM? Our Student Ambassadors are here to share their experiences and answer your questions! Scan the QR code to connect with them directly.



Want a first-hand perspective on studying at LSHTM? Our students share their journeys, tips, and experiences through personal blogs. Scan the QR code to explore their stories.

Find Us



[Facebook](#)



[Instagram](#)



[X
\(Twitter\)](#)



[LinkedIn](#)



[YouTube](#)



[BlueSky](#)



[Sign up to our
Vector* newsletter](#)



[International](#)

Contact us:
study@lshtm.ac.uk
admissions@lshtm.ac.uk