



Contents lists available at ScienceDirect

## Sleep Medicine Reviews

journal homepage: [www.elsevier.com/locate/smr](http://www.elsevier.com/locate/smr)

## CLINICAL REVIEW

## Performance of screening questionnaires for obstructive sleep apnea during pregnancy: A systematic review and meta-analysis

Visasiri Tantrakul<sup>a, b</sup>, Pawin Numthavaj<sup>a, \*</sup>, Christian Guilleminault<sup>c</sup>, Mark McEvoy<sup>d</sup>, Panyu Panburana<sup>e</sup>, Win Khaing<sup>f</sup>, John Attia<sup>d</sup>, Ammarin Thakkinstian<sup>a</sup><sup>a</sup> Section for Clinical Epidemiology and Biostatistics, Faculty of Medicine, Ramathibodi Hospital, Mahidol University, Bangkok, Thailand<sup>b</sup> Ramathibodi Hospital Sleep Disorder Center and Division of Pulmonary and Critical Care, Medicine Department, Ramathibodi Hospital, Mahidol University, Bangkok, Thailand<sup>c</sup> Stanford Center for Sleep Sciences and Medicine, Stanford University, Redwood City, CA, USA<sup>d</sup> Hunter Medical Research Institute and School of Medicine and Public Health, Faculty of Health and Medicine, The University of Newcastle, Australia<sup>e</sup> Division of Maternal Fetal Medicine Unit, Department of Obstetrics and Gynecology, Ramathibodi Hospital, Mahidol University, Bangkok, Thailand<sup>f</sup> Department of Preventive and Social Medicine, University of Medicine, Mandalay, Myanmar

## ARTICLE INFO

## Article history:

Received 16 March 2016  
 Received in revised form  
 3 November 2016  
 Accepted 7 November 2016  
 Available online xxx

## Keywords:

Berlin questionnaire  
 Epworth sleepiness scale  
 Pregnancy  
 Obstructive sleep apnea  
 Systematic review

## SUMMARY

This review aims to evaluate the performance of obstructive sleep apnea (OSA) screening questionnaires during pregnancy. A systematic review and meta-analysis was performed using MEDLINE Scopus, CINAHL, and the Cochrane library. A bivariate meta-analysis was applied for pooling of diagnostic parameters. Six of the total 4719 articles met the inclusion criteria. The Berlin questionnaire (BQ, N = 604) and Epworth sleepiness scale (ESS, N = 420) were the most frequently used screening tools during pregnancy. The pooled prevalence of OSA during pregnancy was 26.7% (95%CI: 16.9%, 34.4%,  $I^2 = 83.15\%$ ). BQ performance was poor to fair with pooled sensitivity and specificity of 0.66 (95%CI: 0.45, 0.83;  $I^2 = 78.65\%$ ) and 0.62 (95%CI: 0.48, 0.75;  $I^2 = 81.55\%$ ), respectively. BQ performance was heterogeneous depending on type of reference test and pregnancy. Sensitivity increased if diagnosis was based on polysomnography (0.90), and respiratory disturbance index (0.90). However, sensitivity decreased if screening was performed in early pregnancy ( $\leq 20$  weeks gestation: 0.47), and high-risk pregnancy (0.44). Performance of ESS was poor with pooled sensitivity and specificity of 0.44 (95%CI: 0.33, 0.56;  $I^2 = 32.8\%$ ) and 0.62 (95%CI: 0.48, 0.75;  $I^2 = 81.55\%$ ), respectively. In conclusion, BQ and ESS showed poor performance during pregnancy, hence a new OSA screening questionnaire is needed.

Registration: PROSPERO registration CRD42015025848.

© 2016 The Authors. Published by Elsevier Ltd. This is an open access article under the CC BY-NC-ND license (<http://creativecommons.org/licenses/by-nc-nd/4.0/>).

## Introduction

Obstructive sleep apnea (OSA) is a significant medical condition occurring from repetitive upper airway collapse during sleep resulting in intermittent oxygen desaturation, arousals, and sympathetic activation [1]. The prevalence of OSA in the general population varies from approximately 2%–26% worldwide [2,3]. However, it has been estimated that up to 93% of women and 82% of men with moderate to severe OSA remain undiagnosed [4]. A

greater proportion of under-diagnosis of OSA in women is probably the result of “non-classical” presentations of OSA especially in premenopausal women [5,6]. Challenges increase when women become pregnant as physiologic and hormonal changes predispose to the development of new-onset sleep-disordered breathing (SDB) or exacerbation of pre-existing SDB [7,8].

However, the prevalence of SDB during pregnancy remains uncertain across the world, and also depends greatly on various factors including the population studied, ethnicity, type of pregnancy (low versus high risk), period of pregnancy, type of diagnostic test, and use of classification cut points [9–14]. Based on previous studies using objective sleep test at a single time point, the prevalence of SDB in high-risk pregnancy ranged from 20% to 35%. This finding is similar to that observed in Thai pregnant women, a prevalence much higher than that reported

\* Corresponding author. Faculty of Medicine, Ramathibodi Hospital, Mahidol University, 270 Rama VI Road, Rachathevi, Bangkok 10400, Thailand. Fax: +66 2 2011284.

E-mail address: [pawin.num@mahidol.ac.th](mailto:pawin.num@mahidol.ac.th) (P. Numthavaj).

<http://dx.doi.org/10.1016/j.smr.2016.11.003>

1087-0792/© 2016 The Authors. Published by Elsevier Ltd. This is an open access article under the CC BY-NC-ND license (<http://creativecommons.org/licenses/by-nc-nd/4.0/>).

**Abbreviations**

AASM	American academy of sleep medicine	MAP index	multivariate apnea prediction index
AHI	apnea-hypopnea index	MeSH	medical subject heading
ANC	antenatal care	OSA	obstructive sleep apnea
ASA checklist	American society of anesthesiologist's checklist	PRISMA	preferred reporting items for systematic reviews and meta-analysis
AUROC	area under the receiver operator curve	PROSPERO	the international prospective register of systematic reviews
BMI	body mass index	PSG	polysomnography
BQ	Berlin questionnaire	PSQI	Pittsburgh sleep quality index
CI	confidence interval	QUADAS-2	quality assessment of diagnostic accuracy studies
DOR	diagnostic odds ratio	RDI	respiratory disturbance index
EDS	excessive daytime sleepiness	SDB	sleep-disordered breathing
ESS	Epworth sleepiness scale	SDQ	sleep disorder questionnaire
FN	false negative	SROC	summary receiver operating curves
FP	false positive	STOP	snoring, tiredness, observed apnea, high blood pressure questionnaire
GA	gestational age	STOP-BANG	snoring, tiredness, observed apnea, high blood pressure - body mass index, age, neck circumference, and gender questionnaire
GDM	gestational diabetes	TN	true negative
GHT	gestational hypertension	TP	true positive
HSROC	hierarchical summary receiver operating curve		
LR+	positive likelihood ratio		
LR-	negative likelihood ratio		

in general non complicated pregnancies [15]. Moreover, prevalence of SDB increases as a pregnancy progresses from the 1st trimester (30%) to the 3rd trimester (47%) in a study with serial screening [7].

Data from meta-analyses also indicate that SDB during pregnancy is associated with adverse maternal and fetal outcomes including gestational hypertension (GHT)/pre-eclampsia, gestational diabetes (GDM) and low infant birth-weight [16,17]. Early screening for OSA in pregnancy may help in reducing these adverse outcomes. However, currently there is no standard guideline for OSA screening during pregnancy despite its potential impact. Although in-laboratory polysomnography (PSG) is the gold standard diagnostic test, long waiting periods for appointments, particularly considering the short time-window to perform the test early during the pregnancy, and the discomfort induced by the sleep test may lead to absence of investigation [18]. Thus, simple and accurate screening strategies should be investigated. Risk stratification for the probability of OSA in pregnant women will also help in prioritizing the need for further diagnostic sleep testing given the limited resources in many places throughout the world. Early diagnosis and treatment of OSA in pregnancy should be implemented given the potential benefit on pregnancy outcomes [19,20].

The Berlin and STOP-BANG questionnaires have been developed and used to identify those at high risk of OSA in non-pregnant populations with fair to good performance [21,22]. For example, the Berlin questionnaire has a sensitivity and specificity ranging from 68% to 86% and 46%–95% [21], respectively, with corresponding pooled values of 72% (95%CI: 66–78%) and 61% (95%CI: 55–67%) [23,24].

Validation studies assessing the performance of the Berlin and STOP-BANG questionnaires during pregnancy have shown inconsistent results. Furthermore, the validity of the tests greatly depends on the severity of SDB itself and the trimester of pregnancy [9–15].

Considering the urgent need for a simple and feasible screening tool for OSA during pregnancy, a systematic review and meta-analysis were performed to clarify the performance of OSA questionnaires when applied to pregnant women. This study aimed to determine the sensitivity, specificity, positive likelihood ratio

(LR+), negative likelihood ratio (LR-), and area under the receiver operator curve (AUROC) of available tests and the prevalence of OSA during pregnancy from existing studies.

**Methods***Search strategy and study location*

Our study protocol was registered with the International prospective register of systematic reviews (PROSPERO) (registration number: CRD42015025848). In order to include all available evidence, a systematic search of the literature was performed through MEDLINE (from 1996 to January 2016), Scopus (from 1980 to January 2016), CINAHL, and Cochrane library. Search terms were built according to the research question which was modelled on the PICO principle, i.e., patient, intervention, comparator, and outcome. These included: pregnancy(MeSH), “pregnant women”, parturient, gestation\*, obstetric\*; “sleep questionnaire”, Berlin, STOP-BANG “Epworth sleepiness scale” or ESS, “Pittsburgh sleep quality index”, PSQI, screening, validation, prevalence, predictors; “sleep test”, polysomnography, PSG, Watch-PAT; and obstructive sleep apnea (MeSH) sleep apnea, obstructive(MeSH), “sleep apnea”, OSA, “sleep disordered breathing”, SDB, snoring. Details of the search strategy are described in the [Appendix](#).

*Inclusion and exclusion criteria*

Any type of observational study (cross-sectional, cohort, or case-control) or randomized-controlled trial published in any language was included in the review if it met all the following criteria: 1) studied in women during pregnancy 2) used at least one of the OSA screening questionnaires (e.g., Berlin questionnaire, STOP-BANG questionnaire, ESS, etc.), and 3) had outcome of interest as OSA/SDB by objective sleep tests including PSG, Watch-PAT [25], or any type 3 home monitoring.

Studies were excluded if they: 1) were reviews or case reports 2) provided insufficient data for pooling despite several attempts to contact authors; or 3) were multiple publications of the same original study.

All citations were then combined and duplicates were excluded. The literature search results were evaluated independently by two reviewers (VT and PN) to locate eligible studies for inclusion. Irrelevant studies were excluded at the first step of the abstracts reviews. The full-text articles of the remaining studies were then retrieved and reviewed thoroughly to determine eligibility. Disagreement between the 2 reviewers was resolved by a third party (AT).

#### Data extraction

Data from the included studies were extracted using standardized data extraction forms. General characteristic of studies and subjects were extracted. For data used for pooling, cross-tabulated numbers of studied sleep questionnaires and standard tests including true positive (TP), false positive (FP), false negative (FN), and true negative (TN) were extracted from individual studies. Additionally, usage of cut-off thresholds for sleep questionnaires and the standard test were also extracted.

#### Studied questionnaires

The Berlin questionnaire consists of 10 self-administered questions with 3 categories regarding risk factors of OSA as follows: snoring component, daytime sleepiness, and obesity (BMI  $\geq 30$  kg/m<sup>2</sup>) or chronic hypertension. Being positive for 2 out of 3 categories is considered as high risk for OSA [21]. The ESS is used to assess daytime sleepiness, consisting of 8 questions regarding propensity to doze off in certain situations. Total ESS scores range from 0 to 24, and a score  $\geq 10$  is defined as excessive daytime sleepiness [26]. Details of all other questionnaires are shown in Table S1.

#### Reference test

The outcome of interest was OSA/SDB diagnosed by performing PSG, Watch-PAT, or any type 3 home monitoring. The diagnosis of OSA/SDB was, according to the original studies, based on an apnea-hypopnea index (AHI) or respiratory disturbance index (RDI)  $\geq 5$  [18].

#### Assessment of methodological quality

Methodological quality of each study was assessed independently by 2 reviewers (VT and PN) based on the QUADAS-2 (quality assessment of diagnostic accuracy studies). The QUADAS-2 tool assesses risk of bias (internal validity) and applicability (external validity) with several domains consisting of patient selection, index test, reference standard, and the flow and timing between index test and reference standard. Each domain is graded as low, high, or unclear risk of bias [27].

#### Statistical analysis

A bivariate meta-analysis with a random-effect model was applied for pooling diagnostic parameters (i.e., sensitivity, specificity, likelihood ratio positive/negative (LR+/LR-), and diagnostic odds ratio (DOR) using metandi and midas commands in STATA [28]. Hierarchical summary receiver operating curves (HSROC) analysis was applied to construct summary receiver operating curves (SROC) and assess threshold effects [29,30]. Pre-test probability (i.e., prevalence of OSA) and positive predictive value were pooled using the user-provided pmeta command in STATA. In addition, a post-test probability was performed for further estimation based on Bayes' theorem and depicted visually with Fagan's nomogram [31]. Heterogeneity was considered present if  $I^2 > 25\%$  or Q test  $< 0.1$ . Exploration of sources of heterogeneity was performed by fitting the co-variables one by one on diagnostic odd

ratios (DOR) incorporating both sensitivity and specificity in a meta-regression, and subgroup and sensitivity analyses were carried out accordingly [32,33]. Publication bias was assessed using Deek's funnel plot [34]. Threshold effects from a different cut-off point in each diagnostic test were also assessed.

#### Results

Our extensive search yielded 4915 citations, as shown in the PRISMA flow diagram in Fig. 1 [35]. After thorough screenings, 31 studies were included in the qualitative assessment, but only 6 studies were eligible for the meta-analysis [9–14]. Characteristics of included studies are summarized in Table 1, and reasons for exclusion of studies are summarized in Table S2 [15,19,20,36–57].

Among the 6 studies, 4 studies enrolled subjects through outpatient antenatal care services (ANC) [9,11–13], whereas 1 study enrolled subjects during obstetric admission [10] and 1 study enrolled subjects both during in-patient and ANC visits [14].

Screening of subjects was performed during the 2nd or 3rd trimesters in 4 studies [9,10,12,14]; gestational age (GA)  $\leq 20$  weeks in 1 study [13]; and at all trimesters in 1 study [11]. One study serially screened subjects with questionnaires during 2nd and 3rd trimesters, but validation PSG was performed only during 3rd trimester [12].

Pregnant women were recruited from the general ANC services in 3 studies [9,12,14]. The other 2 studies included pregnant women during their ANC visit with conditions considered to be high risk for either OSA or obstetric complications, e.g., chronic hypertension, pre-gestational diabetes, GDM, obesity, or a prior history of preeclampsia [11,13]. One study enrolled pregnant women who were admitted to the hospital with conditions, e.g., preterm labor, GDM, preeclampsia, preterm premature rupture of membranes, chronic hypertension, trauma, GHT, pregestational diabetes, and urinary tract infection, and thus was considered as a high risk pregnancy study [10].

A total of 604 singleton pregnant women from 6 studies were included in the meta-analysis. Mean age ranged from 26.6 to 33.5 years with their mean gestational age ranging from 16.5 to 32.3 weeks. The prevalence of OSA (either AHI or RDI  $\geq 5$  events/hour) in overall and low risk pregnancy studies ranged from 12% to 35%, and ranged from 20% to 31.9% in high risk pregnancy studies.

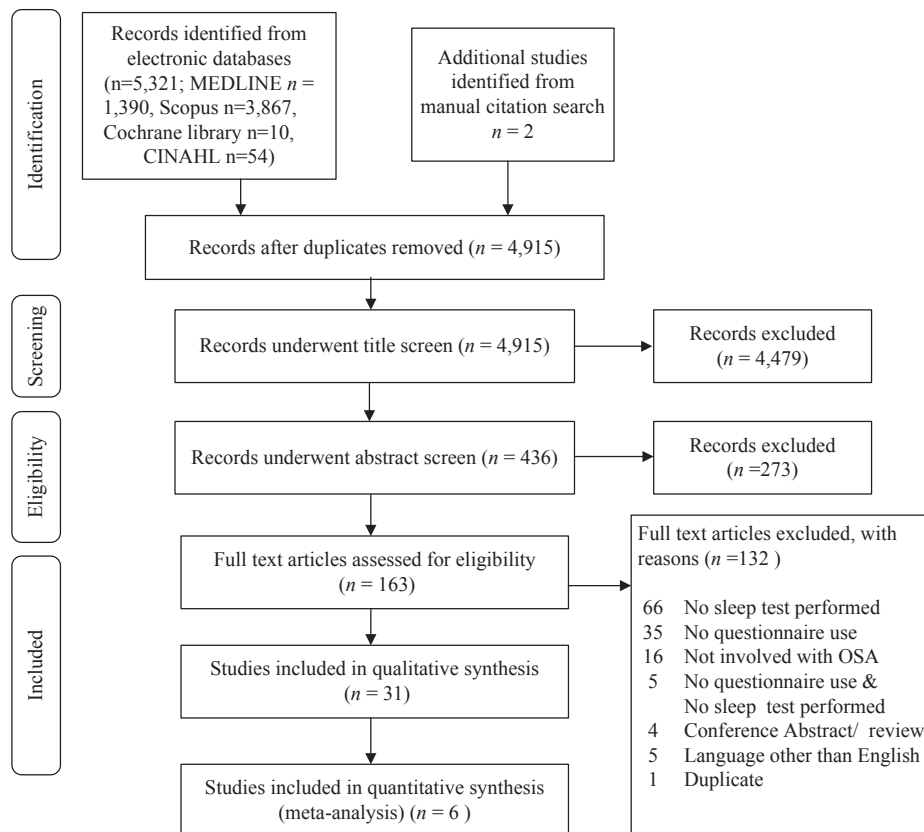
#### Obstructive screening questionnaire characteristics

Among the 6 included studies [9–14], 5 questionnaires had been used for OSA screening, namely the Berlin questionnaire, STOP-BANG questionnaire, STOP questionnaire, ESS, and American Society of Anesthesiologist's checklist (ASA) [21,22,26,58–60]. Two clinical prediction scores for OSA including multivariate apnea prediction index (MAP index) and the Flemons index were used in 3 studies [61,62]. However, results from the MAP index, and Flemons index were not reported and there were insufficient  $2 \times 2$  contingency table data for pooling [9,12,14].

In terms of questionnaire performance, 6 studies used Berlin questionnaire, 3 studies used ESS, 2 studies used STOP-BANG questionnaire, 1 study used STOP questionnaire, and 1 study used ASA checklist. Given the limited data, the meta-analysis was performed only for the Berlin and ESS questionnaires. The qualitative descriptions of reported results of these questionnaires are shown in Table 2 and Table S3.

#### Reference tests

All 6 studies administered at least one of the OSA screening questionnaires, which were validated against reference sleep



**Fig. 1.** PRISMA<sup>34</sup> flow chart of selection of studies. Abbreviations: OSA = obstructive sleep apnea; PRISMA = preferred reporting items for systematic reviews and meta-analysis.

tests. PSG, considered as the gold standard for OSA diagnosis was performed in only 2 studies [9,12] whereas either Watch-PAT (2 studies) [11,13], or ApneaLink (2 studies) were performed in the other studies [10,14]. However, only Watch-PAT has been validated against PSG for the diagnosis of OSA during pregnancy [63].

The 2 studies which performed PSG, used respiratory scoring criteria according to the American academy of sleep medicine scoring manual, 2007 [9,12]. Specifically, apnea was defined as a reduction of thermistor signal of at least 90% from baseline lasting  $\geq 10$  s, and hypopnea (alternative rule) was defined as a reduction in nasal pressure transducer signal of at least 50% from baseline which is associated with either oxygen desaturation  $\geq 3\%$  or arousal. Respiratory effort related arousal (RERA) was defined as a sequence of breaths lasting  $\geq 10$  s characterized by increasing respiratory effort or nasal airflow flattening leading to arousal [18].

One of the 2 studies using ApneaLink defined apneas and hypopneas as the reduction of airflow by 0–20% lasting  $\geq 10$  s, and reduction of airflow by 50% lasting  $\geq 10$  s, respectively [14]. The other ApneaLink study did not specify the criteria used [10].

Scoring of the Watch-PAT studies was based on the automatic algorithm provided by the manufacturer's propriety software based on heart rate and finger plethysmography [11,13].

Tabulation of AHI consisted of numbers of apneas and hypopneas divided by total sleep time (hours). Additionally, respiratory disturbance index (RDI) was defined as numbers of apneas, hypopneas, and RERAs divided by total sleep time (hours) [18].

Four studies diagnosed OSA based on AHI  $\geq 5$  events/hour cut-off threshold, the other 2 studies used a RDI  $\geq 5$  events/hour as

the diagnostic cut-off threshold for OSA. Additionally, result based on a RDI  $\geq 10$  events/hour cut-off was also reported in 1 study [12].

#### Risk of bias assessment

A summary of methodological quality assessment according to the QUADAS-2 tool is shown as a percentage for each domain in Figs. 2 3 and Table S4. Details of the assessment criteria are shown in the Appendix. The agreement among independent reviewers was excellent with  $\kappa$ -statistics of 0.96.

For the patient selection domain, a high risk of bias was documented in 4 studies: convenience sampling in all studies [9,11,12,14] and selection of subsets of subjects at either end of the SDB risk spectrum in 1 study [12]. A high risk of bias for applicability for patient selection was documented in 3 studies due to selection of high risk pregnant women [10,11,13]. This resulted in spectrum bias, i.e., selection of the subjects at either the high or low risk ends of the spectrum of the condition. Risk of bias for the index test domain was high in 1 study because the criteria for diagnosis were not pre-specified [14]. Also, the blinding of the index test interpretation was unclear in 2 studies [10,13]. Concerns regarding applicability of the index test were high in 2 studies due to differences in body mass index (BMI) cut-off threshold for obesity, and timing of measurements during pregnancy [11,14]. A cut-off threshold of BMI  $\geq 30$  kg/m<sup>2</sup> was used in 4 studies [9,10,12,13], whereas a cut-off threshold of 27.5 kg/m<sup>2</sup> was used in 1 Asian study [11], and  $\geq 35$  kg/m<sup>2</sup> in another study [14]. Pre-pregnancy BMI was used in 2 studies [11,13], early pregnancy BMI was used in 1 study [9], and pregnancy BMI was used in 3 studies [10,12,14].

**Table 1**  
Characteristics of the included studies.

Author, year/questionnaire	Study characteristics	Patient characteristics			Diagnosis	OSA	
		Age mean (SD), y	GA mean (SD), wk	BMI mean (SD), kg/m <sup>2</sup>	Sleep test/criteria	Prevalence	Severity
Tantrakul et al. 2015 [11] Berlin STOP-BANG ESS	<b>Study design:</b> Cross sectional study <b>Patients:</b> Singleton pregnancy <b>N = 72</b> <b>Setting:</b> high risk ANC clinic <b>Pregnancy risk:</b> High <b>GA:</b> Any <b>Country:</b> Thailand	33.1 (5.2)	22.8 (9.2)	<b>Pre-pregnancy</b> 24.2 (5.3) <b>Pregnancy</b> 26.9(5.3)	Watch-PAT200 AHI ≥5 Automated analysis on PAT software algorithm	31.9%	<b>Median (IQR) AHI overall</b> 2.4(8.0)
Lockhart et al. 2015 [14] STOP STOP-BANG ESS ASA -checklist	<b>Study design:</b> Prospective Cohort <b>Patients:</b> Volunteer singleton pregnancy <b>N = 248 setting:</b> OPD and IPD ANC service <b>Pregnancy risk:</b> General <b>GA:</b> ≥27 weeks <b>Country:</b> USA	28 (6.3)	32 (3.1)	<b>Pre-pregnancy</b> n/a <b>Pregnancy median (IQR)</b> 31(27–36)	ApneaLink AHI ≥5 Apnea = reduction of airflow to 0–20% lasting ≥10 s; Hypopnea = reduction of airflow to 50% lasting ≥10 s	12%	n/a
Wilson et al. 2013 [12] Berlin MAP Index	<b>Study design:</b> Prospective Cohort <b>Patients:</b> Singleton pregnancy <b>N = 43</b> <b>Setting:</b> ANC clinic <b>Pregnancy risk:</b> General <b>GA:</b> 2 <sup>nd</sup> –3 <sup>rd</sup> trimesters <b>Country:</b> Australia	33.5 (5.1)	22.3 (4.0)	<b>Pre-pregnancy</b> 32.2(8.0) <b>Pregnancy</b> 37.5(7.9)	PSG RDI ≥5 RDI ≥10 Scoring based on AASM 2007 criteria, alternative hypopnea rule (defined as reduction of nasal pressure signal at least 50% lasting ≥10 s with either oxygen desaturation ≥3% or arousal)	35%	<b>Median (IQR) AHI Without OSA:</b> 1.5 (0.6–2.7) <b>With OSA:</b> 6.2 (4.9–13.2)
Fung et al. 2013 [9] Berlin MAP Index	<b>Study design:</b> Prospective Cohort <b>Patients:</b> Convenient sample of singleton pregnancy <b>N = 41</b> <b>setting:</b> ANC clinic <b>Pregnancy risk:</b> General <b>GA:</b> 2 <sup>nd</sup> trimester with 3 <sup>rd</sup> trimester follow-up <b>Country:</b> Australia	31.2 ?	21.4 (2.4)	<b>Pre-pregnancy</b> 26.1(6.4) <b>Pregnancy</b> n/a	PSG RDI ≥5 Scoring based on AASM 2007 criteria, alternative hypopnea (defined as reduction of nasal pressure signal at least 50% lasting ≥10 s with either oxygen desaturation ≥3% or arousal)	34%	<b>Median (IQR) RDI Without OSA:</b> 1.4 (0.6–2.6) <b>With OSA:</b> 6.2 (4.9–11.7)
Facco et al. 2012 [13] Berlin ESS	<b>Study design:</b> Prospective Cohort <b>Patients:</b> Singleton pregnancy <b>N = 100</b> <b>setting:</b> ANC Clinic <b>Pregnancy Risk:</b> High risk for OSA <b>GA:</b> 6–20 week <b>Country:</b> USA	33.0 (6.5)	16.5 (3.7)	<b>Pre-pregnancy</b> 31.9 (9.1) <b>Pregnancy</b> n/a	Watch-PAT100 AHI ≥5 Automated analysis on PAT software algorithm	28%	<b>Median (IQR) AHI Overall</b> 1.5 (0.5–6.0)
Olivarez et al. 2010 [10] Berlin	<b>Study design:</b> Prospective Cohort <b>Patients:</b> Singleton pregnancy <b>N = 100</b> <b>setting:</b> antepartum obstetric admission <b>Pregnancy risk:</b> High <b>GA:</b> ≥26 weeks <b>Country:</b> USA	26.6 (7.1)	32.3 (3.5)	<b>Pre-pregnancy</b> n/a <b>Pregnancy</b> 27.5 (7.2)	ApneaLink AHI ≥5 Apnea and hypopnea definitions were not specified	20%	n/a

Abbreviations: AASM = American academy of sleep medicine; AHI = apnea-hypopnea index; ANC = antenatal care; ASA checklist = American society of anesthesiologist's checklist; BMI = body mass index; ESS = Epworth sleepiness scale; GA = gestational age; IQR = interquartile range; IPD = in-patient department; MAP index = multivariate apnea prediction index; n/a = not applicable; OPD = out-patient department; OSA = obstructive sleep apnea; RDI = respiratory disturbance index; SD = standard deviation.

In terms of reference test, a high risk of bias was documented in 4 studies due to the fact that the testing was performed either with Apnea-Link or Watch-PAT instead of standard PSG [9,11,13,14]. An unclear risk of bias was present in 1 study due to unclear information on previous knowledge of the result of the test prior to study interpretation. Applicability of the reference test was rated

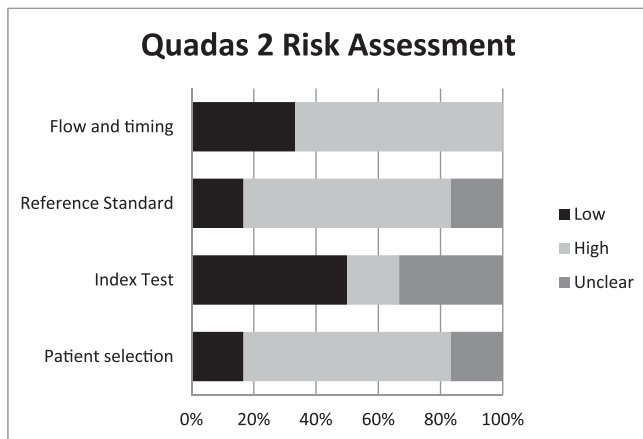
high bias in 2 studies using ApneaLink because the criteria used for hypopnea scoring was not according to the American academy of sleep medicine sleep scoring manual [10,14].

Appropriate timing between questionnaire (index test) administration and sleep testing (reference standard) is considered to be under 2 weeks, see Appendix. Risk of bias assessment in the flow

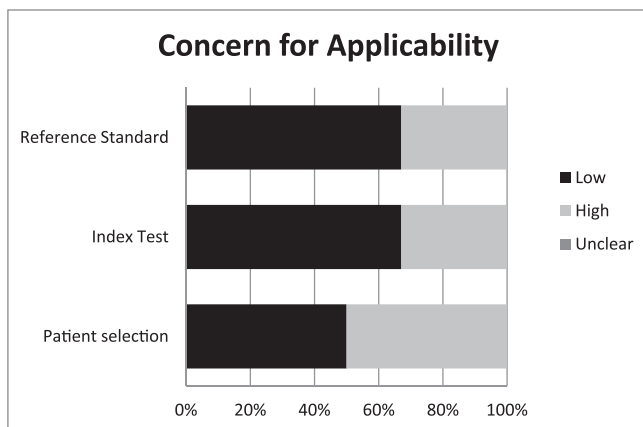
**Table 2**  
Diagnostic data and performance of Berlin questionnaire and Epworth sleepiness scale for screening of OSA during pregnancy.

Questionnaire/study	TP	FP	FN	TN	Sensitivity (95%CI)	Specificity (95%CI)	LR+ (95%CI)	LR- (95%CI)
<b>Berlin</b>								
Tantrakul et al. 2015 [11]	13	6	10	43	0.57 (0.34, 0.77)	0.88 (0.75, 0.95)	4.62 (2.01, 10.6)	0.50 (0.31, 0.80)
Lockhart et al. 2015 [14]	22	85	8	133	0.73 (0.54, 0.88)	0.61 (0.54, 0.68)	1.88 (1.43, 2.47)	0.44 (0.24, 0.80)
Wilson et al. 2013 [12]	13	19	2	9	0.87 (0.60, 0.98)	0.32 (0.16, 0.52)	1.28 (0.92, 1.76)	0.41 (0.1, 1.68)
Fung et al. 2013 [9]	13	13	1	14	0.93 (0.66, 1.00)	0.52 (0.32, 0.71)	1.93 (1.27, 2.93)	0.14 (0.02, 0.94)
Facco et al. 2012 [13]	11	23	17	49	0.39 (0.15, 0.59)	0.68 (0.56, 0.79)	1.23 (0.69, 2.18)	0.89 (0.64, 1.25)
Olivarez et al. 2010 [10]	7	29	13	51	0.35 (0.15, 0.50)	0.64 (0.52, 0.74)	0.97 (0.50, 1.88)	1.02 (0.71, 1.46)
<b>ESS</b>								
Tantrakul et al. 2015 [11]	9	19	14	28	0.39 (0.20, 0.61)	0.60 (0.44, 0.74)	0.97 (0.52, 1.79)	1.02 (0.68, 1.53)
Lockhart et al. 2015 [14]	15	88	11	119	0.58 (0.37, 0.77)	0.57 (0.50, 0.64)	1.36 (0.94, 1.96)	0.74 (0.46, 1.17)
Facco et al. 2012 [13]	10	17	18	55	0.36 (0.19, 0.56)	0.76 (0.65, 0.86)	1.51 (0.79, 2.89)	0.84 (0.62, 1.14)

Abbreviations: CI = confidence interval; ESS = Epworth sleepiness scale; FN = false negative; FP = false positive; LR- = likelihood ratio negative; LR+ = likelihood ratio positive; OSA = obstructive sleep apnea; TN = true negative; TP = true positive.



**Fig. 2.** Quality assessment for diagnostic test of the included studies according to the QUADAS-2 tool: proportion of studies with low, high, or unclear RISK of BIAS.



**Fig. 3.** Quality assessment for diagnostic test of the included studies according to the QUADAS-2 tool: proportion of studies with low, high, or unclear concerns regarding applicability.

and timing domain were high in 4 studies. The reasons were inappropriate interval between index test and reference standard (>2 weeks) in 2 studies [9,12]; not all subjects underwent the objective sleep testing in 2 studies [12,14]; not all subjects underwent the same type of recording in 1 study [9]; and not all subjects were included in the analysis in 3 studies [12–14]. Verification bias

occurred if not all of the included subjects were subjected to an objective nocturnal sleep test [64–66].

High risk of bias and applicability occurred because of differences in methodology, especially the diagnostic measure of OSA and pregnancy risks. However, these factors were also included in the meta-regression to clarify the potential effect on questionnaire performance.

#### Performance of Berlin questionnaire

Among 6 included studies (n = 604), the overall pooled prevalence of OSA was 26.7% (95%CI: 16.9%, 34.4%). When categorized into low and high risk pregnancy, the pooled prevalence was approximately 23.5% (95%CI: 12.8%, 34.2%,  $I^2 = 82.7%$ ,  $p < 0.001$ ) and 29.6% (95%CI: 22.8%, 36.4%,  $I^2 = 0$ ,  $p = 0.59$ ), respectively.

The sensitivity and specificity of the Berlin questionnaires varied highly across studies, i.e., ranging from 0.35 to 0.93 and 0.32 to 0.88, respectively (see Fig. 4). The pooled sensitivity and specificity were 0.66 (95%CI: 0.45, 0.83;  $I^2 = 78.65$  and Q test  $p < 0.001$ ) and 0.62 (95%CI: 0.48–0.75;  $I^2 = 81.55$  and Q test  $p < 0.001$ ), respectively.

The LR+ and LR- were heterogeneous ranging from 0.97 to 4.62 and 0.14 to 1.02, respectively. The pooled LR+ and LR- were 1.75 (95%CI: 1.28–2.38;  $I^2 = 28.85$  and Q test  $p = 0.02$ ) and 0.54 (95%CI: 0.33, 0.90  $I^2 = 69.91$  and Q test  $p = 0.01$ ), respectively (see Figure S1).

The DORs varied greatly across studies and ranged from 0.95 to 14.0, leading to a pooled DOR of 3.23 (95%CI: 1.54–6.77;  $I^2 = 96.49$  and Q test  $p < 0.001$ ), see Figure S2). This suggests that the odds of having OSA are 3 times higher in those with a positive Berlin questionnaire than those with a negative Berlin questionnaire. In addition, the SROC was estimated and graphed, which yielded an area under the curve (AUC) of 0.68 (95%CI 0.08–0.98), see Fig. 5.

Finally, the post-test probability was estimated using Fagan's nomogram (see Fig. 6), which yielded a post-test probability of 38% given a pre-test probability of 26% and LR+ of 1.75. This suggests that the overall probability of OSA occurrence is 38% if a pregnant woman has a positive Berlin questionnaire result.

#### Assessment of heterogeneity

Across studies, the Berlin questionnaire showed extremely high heterogeneity for the DOR with an  $I^2$  of 91.0% (95%CI: 83%, 100%). The estimated threshold effect was  $-0.02$  (95%CI:  $-0.70$ , 0.66), which suggests that the threshold cutoff of the Berlin score was only minimally influenced by heterogeneity.

Other sources of heterogeneity were explored with meta-regression, as shown in Figure S3. Results showed that

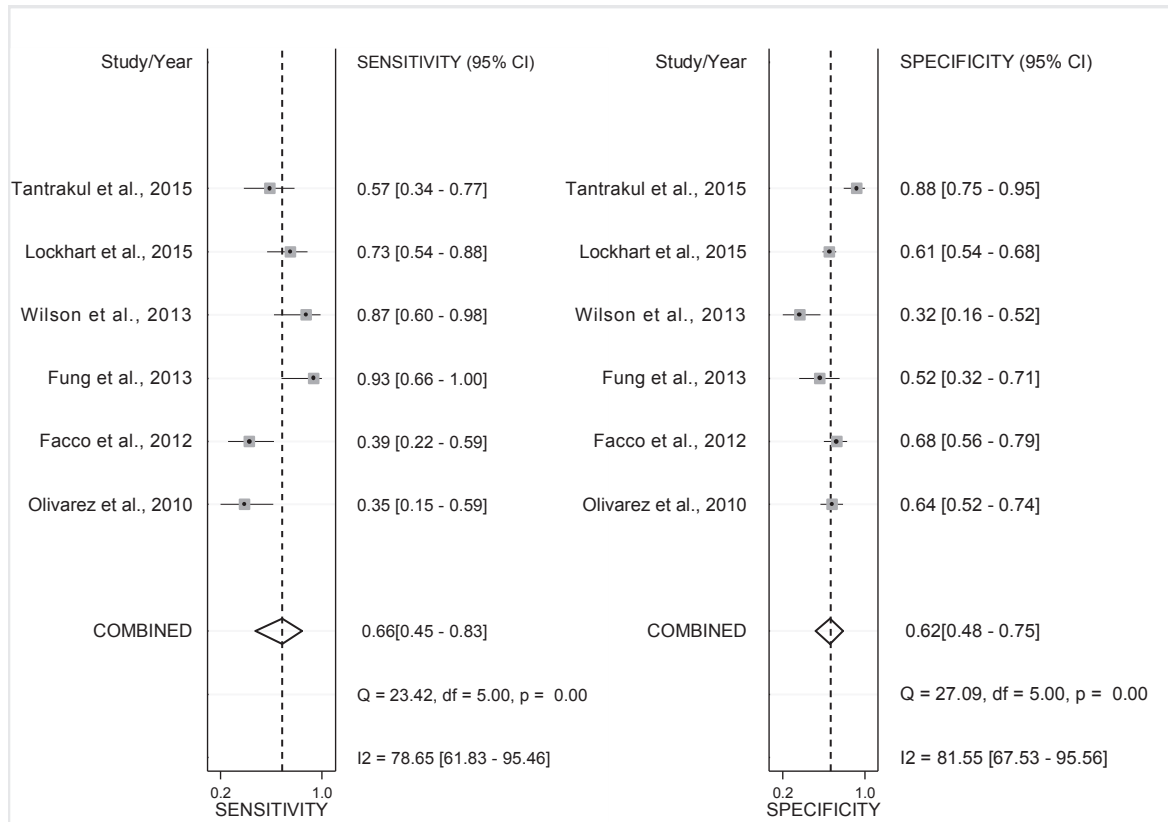


Fig. 4. Forest plot for Berlin questionnaire in screening OSA during pregnancy. Abbreviations: CI = confidence interval; df = degree of freedom; OSA = obstructive sleep apnea.

differences in the performances of the Berlin questionnaire (i.e., sensitivity and specificity) were accounted for by the use of PSG (yes/no), RDI vs AHI for OSA diagnosis, and risk of pregnancy (low vs high).

Accordingly, subgroup analyses were performed, which revealed improvements in sensitivity among those studies which used PSG and RDI as the reference tests, with a pooled sensitivity of 0.90 (95%CI:0.78–1.00), 0.90 (95%CI:0.78–1.00), respectively (See Table 3). In addition, the sensitivity was also higher in pregnant women in general ANC clinic and when the GA was above 20 weeks, with pooled sensitivities of 0.81 (95%CI: 0.71, 0.91) and 0.74 (95%CI: 0.56–0.93), respectively.

#### Publication bias assessment

Publication bias was assessed based on the DOR using Deek's funnel plot and test, see Figure S4. The funnel is symmetrical and this corresponded with Deek's test (coefficient = 11.47, SE = 19.01,  $p$ -value of 0.60) suggesting that a study size effect (publication bias) was unlikely.

#### ESS performance

Meta-analysis of ESS performance was analyzed from only 3 studies ( $N = 420$ ), see Table 2. The sensitivity and specificity of ESS across different studies ranged from 0.36 to 0.58 and 0.58 to 0.76, respectively. The pooled sensitivity was 0.44 (95%CI: 0.33, 0.56;  $I^2 = 32.8\%$  and  $Q$  test  $p = 0.23$ ), with a pooled specificity of 0.62 (95%CI: 0.57, 0.67;  $I^2 = 76.9\%$  and  $Q$  test  $p = 0.013$ ). The pooled LR+ was 1.29 (95%CI: 0.973, 1.71;  $I^2 = 0\%$   $Q$  test

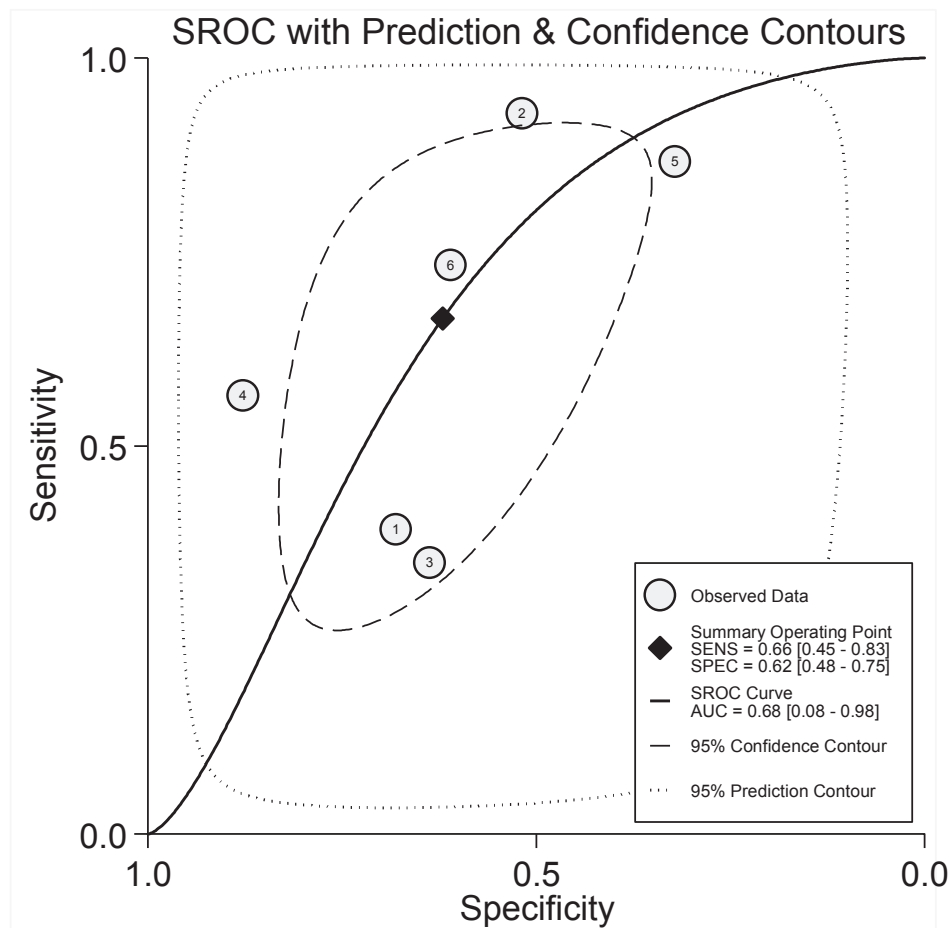
$p = 0.56$ ), and the pooled LR- was 0.86 (95%CI: 0.70, 1.07;  $I^2 = 0\%$  and  $Q$  test  $p = 0.55$ ). The pooled DOR was 1.53 (95%CI: 0.89, 2.60;  $I^2 = 0\%$  and  $Q$  test  $p = 0.56$ ). These results indicate a low heterogeneity.

#### Discussion

We performed a systematic review and meta-analysis of how screening questionnaires for OSA performed during pregnancy. Our findings indicated that the Berlin questionnaire has poor to fair performance with a pooled sensitivity, specificity, LR+, and LR- of 0.66, 0.62, 1.75, and 0.68, respectively. Using the Berlin questionnaire could change the pre-test probability of being recognized with OSA from 26% to 38%. The ESS had a very poor predictive value.

A Fagan plot obtained using the Berlin questionnaire to detect OSA during pregnancy showed that it did not help clinical decision making either on treatment threshold (confirmation) or test threshold (exclusion). There was a high degree of heterogeneity in the usage of the Berlin questionnaire, but only a small threshold effect from a hierarchical SROC curve analysis. We attempted to explore the source/s of the noted heterogeneity using meta-regression analysis. The results showed a higher sensitivity of the Berlin questionnaire if the reference test was a PSG, and looking at RDI. The sensitivity was also higher in the general pregnancy population compared to high risk pregnancy, and if it was performed after 20 weeks of gestation.

The explanation for the poor discriminative values of the conventional OSA screening questionnaires during pregnancy might be



**Fig. 5.** Summary receiver operator curve (SROC) of Berlin questionnaire for diagnosis of OSA during pregnancy. Abbreviations: AUC = area under the curve; SENS = sensitivity; SPEC = specificity; SROC = summary receiver operator curve.

related to the facts that 1) both OSA and pregnancy lead to similar sleep complaints; 2) that there is a continuous change in symptomatology and the severity of the sleep-disordered-breathing with progression of pregnancy; 3) that the standard and threshold to diagnose SDB during pregnancy has not been defined; 4) finally, that the optimal timing of the questionnaire administration has not been standardized.

The Berlin questionnaire and ESS were the most frequently used screening tools during pregnancy. There are several other available OSA screening questionnaires such as the Nordic sleep questionnaire, and sleep disorder questionnaire, but they have not been tested or validated on pregnant women [23,24]. The majority of pregnant women experienced poor sleep quality, insufficient nocturnal sleep and daytime sleepiness. Sleep disruption occurs from early pregnancy and increases, particularly during the third trimester [8,67–69]. Our result showed higher sensitivity of the Berlin questionnaire after 20 weeks gestational age. Our findings indicate that more sensitive and specific sleep questionnaires in pregnancy are needed.

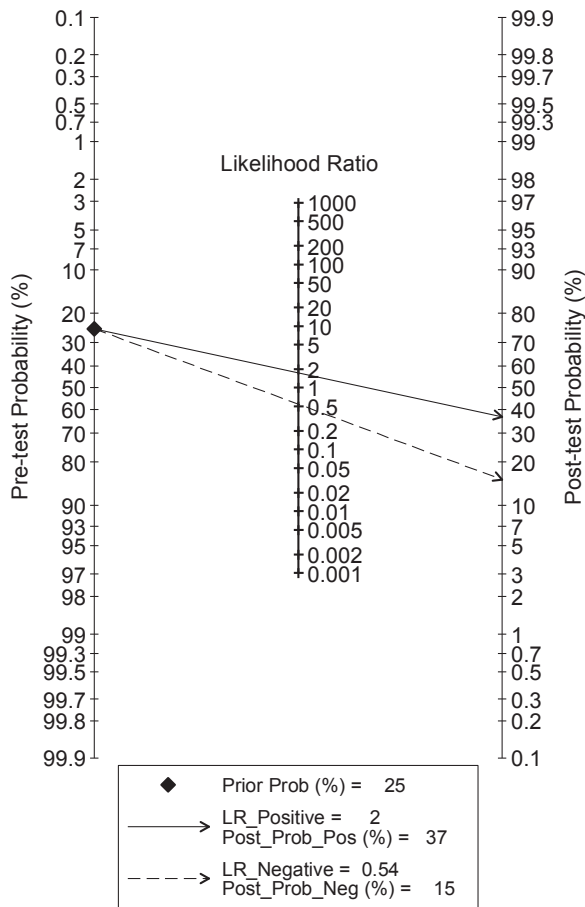
The ESS was of very little help in suggesting OSA during pregnancy. Excessive daytime sleepiness (EDS) is highly prevalent (31.0%–45.5%) even in early pregnancy and increased significantly as pregnancy progressed, probably due to the increase in progesterone and sleep disruption from pregnancy per se [70,71]. EDS (ESS $\geq$ 10) is not associated with GDM and GHT. However, an ESS score  $>$ 16 was associated with GDM [70,71]. There is a correlation

between an increasing ESS score and the other symptoms of SDB such as loud snoring, and apnea; such findings raise the question of the optimal cut-off threshold for ESS in pregnant women. In addition, ESS had been found to be poorly predictive of OSA in non-pregnant population, so it is not surprising that it does not predict OSA in pregnancy [72,73]. Given that ESS is a better predictor of depression compared to other health outcomes, it might be worth looking at this association in pregnancy cohorts [74–76].

Worsening of OSA severity and symptoms occurred as pregnancy progressed and the prevalence of OSA increased from early pregnancy to 3rd trimester [7,69]. During the 3rd trimester, the incidence of new-onset SDB was reported at 20%, in association with twin pregnancy and new-onset of self-reported frequent snoring [7]. Pregnancy-onset snoring was also reported to be associated with pre-eclampsia [49]. This finding highlights the potential for SDB to impact adversely on maternal and fetal outcomes during pregnancy. However, there is still a lack of evidence for SDB during pregnancy, particularly with respect to the role of screening for SDB and potential benefits of treatment, which highlights the urgent need for more research in this area.

Recently, the STOP-BANG questionnaire has become more popular, given its simplicity and greater consistency across different AHI severity, when compared to the Berlin questionnaire [22,72,77]. But whether this remains true in pregnancy population needs further study. A recent review also pointed out that the current OSA





**Fig. 6.** Fagan plot of Berlin questionnaire for diagnosis of OSA during pregnancy. Abbreviations: LR\_negative = likelihood ratio negative; LR\_positive = likelihood ratio positive; OSA = obstructive sleep apnea; Post\_Prob\_neg = posterior probability negative; Post\_Prob\_Pos = posterior probability positive; Prior Prob = prior probability.

screening tools may not perform well in pregnancy. However, this article was not a systematic review or meta-analysis [78].

Interestingly, from our review the performance of OSA screening questionnaire from all the included studies was compared against the diagnosis of OSA with either AHI or RDI  $\geq$  5 events/hour. There were not enough data available on moderate to severe OSA in pregnancy. The majority of SDB during pregnancy were mild as reported in a high risk cohort [7]. However, even mild

SDB during pregnancy might be important as adverse outcomes have been reported [9,79].

In contrast to the non-pregnant population, OSA screening questionnaires were mostly performed based on the diagnosis of moderate to severe severity (AHI  $\geq$ 15 events/hour) [23,24], given the unclear impact of mild OSA and its treatment on the cardiovascular outcomes [80,81].

There were some limitations in our study. First, there was only a small number of available studies. Second, presence of verification and spectrum biases in some of the included studies might have caused overestimation of questionnaire performance, particularly for sensitivity [64–66]. Third, there was a high degree of heterogeneity among studies regarding recruited population, and diagnosis measures, therefore caution must be taken in generalization of the results.

In conclusion, with the complexity and the dynamic change of OSA and pregnancy, screening for this condition during pregnancy is complicated. Current OSA screening questionnaires perform poorly during pregnancy. There is a need for tools that take into account the changes over time of the symptoms of OSA, and pregnancy. New screening tools and strategies specific to pregnancy that enable us to serially screen and monitor for OSA throughout pregnancy should be developed.

**Practice points**

- Diagnosis of OSA during pregnancy is challenging despite its adverse effect on maternal and fetal outcomes.
- Early diagnosis and treatment of OSA during pregnancy may have potential benefits on pregnancy outcomes.
- Current conventional OSA screening questionnaires perform poorly in pregnancy. And there is no standard guideline for screening and treatment of OSA during pregnancy.

**Research agenda**

- There is an urgent need for a simple and accurate screening tool for OSA during pregnancy.
- As pregnancy progresses, there are dynamic changes of OSA and pregnancy. Hence a specific screening tool that can successively screen for OSA throughout pregnancy should be developed and validated.

**Table 3**  
Meta-regression and subgroup analyses for Berlin questionnaire during pregnancy.

Factors	Conditions	No. of studies	I <sup>2</sup>	Sensitivity (95%CI)	p-value	Specificity (95%CI)	p-value
All studies		6	96.5	0.67 (0.45, 0.83)		0.62 (0.48, 0.74)	
Risk of pregnancy	High	3	83%	0.44(0.32, 0.56)	<0.001	0.74(0.62, 0.85)	0.35
	General	3		0.81(0.71, 0.91)		0.51(0.35, 0.67)	
Reference sleep test	PSG	2	79%	0.90(0.78, 1.00)	0.03	0.42(0.23, 0.60)	0.03
	Non-PSG	4		0.52(0.37, 0.67)		0.70(0.60, 0.79)	
Respiratory index	AHI	4	79%	0.52(0.37, 0.67)	0.03	0.70(0.60, 0.79)	0.03
	RDI	2		0.90(0.78, 1.00)		0.42(0.23, 0.60)	
Early pregnancy (GA $\leq$ 20 weeks)	Yes	2	58%	0.47(0.17, 0.78)	0.15	0.78(0.65, 0.90)	0.38
	No	4		0.74 (0.56, 0.93)		0.54(0.42, 0.66)	

Abbreviations: AHI = apnea-hypopnea index; CI = confidence interval; GA = gestational age; OSA = obstructive sleep apnea; PSG = polysomnography; RDI = respiratory disturbance index.

## Conflicts of interest

None of the authors had a conflict of interest or financial support.

## Authors' contribution

Study concept and design: VT, PN, CG, WK, AT. Study selection and risk of bias assessment: VT, PN, WK. Data extraction: VT, PN. Data analysis: VT, AT. Interpretation of data: VT, PN, CG, MM, PP, WK, JA, AT. Drafting the manuscript: VT, PN, CG, MM, PP, JA, AT. Critical revision of the manuscript for important intellectual content: VT, PN, CG, MM, PP, JA, AT. Final approval of the version to be published: all authors read and approved the final manuscript.

## Acknowledgments

This study is a part of Dr. Visasiri Tantrakul's training in Ph.D. program for Clinical Epidemiology, Faculty of Medicine, Ramathibodi Hospital and Faculty of Graduate Studies, Mahidol University, Bangkok, Thailand. All authors declare that no funding source or any sponsor was involved in this study and manuscript preparation for publication. We would like to thank Mr. Stephen Pinder for checking and improving the English of our manuscript.

## Appendix A. Supplementary data

Supplementary data related to this article can be found at <http://dx.doi.org/10.1016/j.smrv.2016.11.003>.

## References

- [1] Somers VK, Dyken ME, Clary MP, Abboud FM. Sympathetic neural mechanisms in obstructive sleep apnea. *J Clin Invest* 1995;96(4):1897–904.
- [2] Shahar E, Whitney CW, Redline S, Lee ET, Newman AB, Nieto FJ, et al. Sleep-disordered breathing and cardiovascular disease: cross-sectional results of the Sleep Heart Health Study. *Am J Respir Crit Care Med* 2001;163(1):19–25.
- [3] Young T, Palta M, Dempsey J, Skatrud J, Weber S, Badr S. The occurrence of sleep-disordered breathing among middle-aged adults. *N Engl J Med* 1993;328(17):1230–5.
- [4] Young T, Evans L, Finn L, Palta M. Estimation of the clinically diagnosed proportion of sleep apnea syndrome in middle-aged men and women. *Sleep* 1997;20(9):705–6.
- [5] Tantrakul V, Guilleminault C. Chronic sleep complaints in premenopausal women and their association with sleep-disordered breathing. *Lung* 2009;187(2):82–92.
- [6] Tantrakul V, Park CS, Guilleminault C. Sleep-disordered breathing in premenopausal women: differences between younger (less than 30 years old) and older women. *Sleep Med* 2012;13(6):656–62.
- \*[7] Facco FL, Ouyang DW, Zee PC, Grobman WA. Sleep disordered breathing in a high-risk cohort prevalence and severity across pregnancy. *Am J Perinatol* 2014;31(10):899–904.
- [8] Hedman C, Pohjasvaara T, Tolonen U, Suhonen-Malm AS, Myllylä VV. Effects of pregnancy on mothers' sleep. *Sleep Med* 2002;3(1):37–42.
- \*[9] Fung AM, Wilson DL, Lappas M, Howard M, Barnes M, O'Donoghue F, et al. Effects of maternal obstructive sleep apnoea on fetal growth: a prospective cohort study. *PLoS One* 2013;8(7).
- \*[10] Olivarez SA, Maheshwari B, McCarthy M, Zacharias N, van den Veyver I, Casturi L, et al. Prospective trial on obstructive sleep apnea in pregnancy and fetal heart rate monitoring. *Am J Obstetrics Gynecol* 2010;202(6):552. e1–e7.
- \*[11] Tantrakul V, Sirijanchune P, Panburana P, Pengjam J, Suwansathit W, Boonsarnsuk V, et al. Screening of obstructive sleep apnea during pregnancy: differences in predictive values of questionnaires across trimesters. *J Clin Sleep Med JCSM Off Publ Am Acad Sleep Med* 2015;11(2):157–63.
- \*[12] Wilson DL, Walker SP, Fung AM, O'Donoghue F, Barnes M, Howard M. Can we predict sleep-disordered breathing in pregnancy? The clinical utility of symptoms. *J Sleep Res* 2013;22(6):670–8.
- \*[13] Facco FL, Ouyang DW, Zee PC, Grobman WA. Development of a pregnancy-specific screening tool for sleep apnea. *J Clin Sleep Med* 2012;8(4):389–94.
- \*[14] Lockhart EM, Ben Abdallah A, Tuuli MG, Leighton BL. Obstructive sleep apnea in pregnancy: assessment of current screening tools. *Obstet Gynecol* 2015;126(1):93–102.
- [15] Antony KM, Agrawal A, Arndt ME, Murphy AM, Alapat PM, Guntupalli KK, et al. Obstructive sleep apnea in pregnancy: reliability of prevalence and prediction estimates. *J Perinatol* 2014;34(8):587–93.
- \*[16] Pamidi S, Pinto LM, Marc I, Benedetti A, Schwartzman K, Kimoff RJ. Maternal sleep-disordered breathing and adverse pregnancy outcomes: a systematic review and meta-analysis. *Am J Obstetrics Gynecol* 2014;210(1):52. e1–e14.
- [17] Xu T, Feng Y, Peng H, Guo D, Li T. Obstructive sleep apnea and the risk of perinatal outcomes: a meta-analysis of cohort studies. *Sci Rep* 2014;4.
- [18] Iber C, Ancoli-Israel S, Chesson AL, Quan SF. The AASM manual for the scoring of sleep and associated events: rules, terminology and technical specifications. Westchester, IL: American academy of sleep medicine; 2007.
- [19] Guilleminault C, Palombini L, Poyares D, Takaoka S, Huynh NT, El-Sayed Y. Pre-eclampsia and nasal CPAP: part 1. Early intervention with nasal CPAP in pregnant women with risk-factors for pre-eclampsia: preliminary findings. *Sleep Med* 2007;9(1):9–14.
- [20] Poyares D, Guilleminault C, Hachul H, Fujita L, Takaoka S, Tufik S, et al. Pre-eclampsia and nasal CPAP: part 2. Hypertension during pregnancy, chronic snoring, and early nasal CPAP intervention. *Sleep Med* 2007;9(1):15–21.
- [21] Netzer NC, Stoohs RA, Netzer CM, Clark K, Strohl KP. Using the Berlin Questionnaire to identify patients at risk for the sleep apnea syndrome. *Ann Intern Med* 1999;131(7):485–91.
- [22] Chung F, Subramanyam R, Liao P, Sasaki E, Shapiro C, Sun Y. High STOP-Bang score indicates a high probability of obstructive sleep apnoea. *Br J Anaesth* 2012;108(5):768–75.
- [23] Abrishami A, Khajehdehi A, Chung F. A systematic review of screening questionnaires for obstructive sleep apnea. *Can J Anaesth* 2010;57(5):423–38.
- [24] Ramachandran SK, Josephs LA. A meta-analysis of clinical screening tests for obstructive sleep apnea. *Anesthesiology* 2009;110(4):928–39.
- [25] Yalamanchali S, Farajian V, Hamilton C, Pott TR, Samuelson CG, Friedman M. Diagnosis of obstructive sleep apnea by peripheral arterial tonometry: meta-analysis. *JAMA Otolaryngol – Head Neck Surg* 2013;139(12):1343–50.
- [26] Johns MW. Daytime sleepiness, snoring, and obstructive sleep apnea. The Epworth sleepiness scale. *Chest* 1993;103(1):30–6.
- [27] Whiting PF, Rutjes AW, Westwood ME, Mallett S, Deeks JJ, Reitsma JB, et al. QUADAS-2: a revised tool for the quality assessment of diagnostic accuracy studies. *Ann Intern Med* 2011;155(8):529–36.
- [28] Reitsma JB, Glas AS, Rutjes AW, Scholten RJ, Bossuyt PM, Zwinderman AH. Bivariate analysis of sensitivity and specificity produces informative summary measures in diagnostic reviews. *J Clin Epidemiol* 2005;58(10):982–90.
- [29] Rutter CM, Gatsonis CA. A hierarchical regression approach to meta-analysis of diagnostic test accuracy evaluations. *Statistics Med* 2001;20(19):2865–84.
- [30] Walter SD. Properties of the summary receiver operating characteristic (SROC) curve for diagnostic test data. *Statistics Med* 2002;21(9):1237–56.
- [31] Fagan TJ. Letter: nomogram for Bayes theorem. *N Engl J Med* 1975;293(5):257.
- [32] van Houwelingen HC, Arends LR, Stijnen T. Advanced methods in meta-analysis: multivariate approach and meta-regression. *Statistics Med* 2002;21(4):589–624.
- [33] Glas AS, Lijmer JG, Prins MH, Bonsel GJ, Bossuyt PM. The diagnostic odds ratio: a single indicator of test performance. *J Clin Epidemiol* 2003;56(11):1129–35.
- [34] Deeks JJ, Macaskill P, Irwig L. The performance of tests of publication bias and other sample size effects in systematic reviews of diagnostic test accuracy was assessed. *J Clin Epidemiol* 2005;58(9):882–93.
- [35] Liberati A, Altman DG, Tetzlaff J, Mulrow C, Gotzsche PC, Ioannidis JP, et al. The PRISMA statement for reporting systematic reviews and meta-analyses of studies that evaluate health care interventions: explanation and elaboration. *Ann Intern Med* 2009;151(4):W65–94.
- [36] Karaduman M, Sari O, Aydogan U, Akpak YK, Semiz A, Yilanlioglu NC, et al. Evaluation of obstructive sleep apnea symptoms in pregnant women with chronic disease. *J Maternal-Fetal Neonatal Med Official J Eur Assoc Perinat Med Fed Asia Ocean Perinat Soc Int Soc Perinat Obstet* 2016;1–7.
- [37] Sharma SK, Nehra A, Sinha S, Soneja M, Sunesh K, Sreenivas V, et al. Sleep disorders in pregnancy and their association with pregnancy outcomes: a prospective observational study. *Sleep Breath* 2016;20(1):87–93.
- [38] Facco FL, Parker CB, Reddy UM, Silver RM, Louis JM, Basner RC, et al. NuMoM2b sleep-disordered breathing study: objectives and methods. *Am J Obstet Gynecol* 2015;212(4):542. e1–127.
- [39] Haas DM, Parker CB, Wing DA, Parry S, Grobman WA, Mercer BM, et al. A description of the methods of the nulliparous pregnancy outcomes study: monitoring mothers-to-be (nuMoM2b). *Am J Obstetrics Gynecol* 2015;212(4):539. e1–e24.
- [40] Tauman R, Zuk L, Uliel-Sibony S, Ascher-Landsberg J, Katsav S, Farber M, et al. The effect of maternal sleep-disordered breathing on the infant's neurodevelopment. *Am J Obstetrics Gynecol* 2015;212(5):656. e1–e7.

\* The most important references are denoted by an asterisk.

- [41] Rice JR, Larrabure-Torrealva GT, Fernandez MAL, Grande M, Motta V, Barrios YV, et al. High risk for obstructive sleep apnea and other sleep disorders among overweight and obese pregnant women. *BMC Pregnancy Childbirth* 2015;15(1).
- [42] Howe LD, Signal TL, Paine SJ, Sweeney B, Priston M, Muller D, et al. Self-reported sleep in late pregnancy in relation to birth size and fetal distress: the E Moe, Mama prospective cohort study. *BMJ Open* 2015;5(10):e008910.
- [43] Fernandez Alonso AM, Chedraui P, Perez-Lopez FR. Assessment of obstructive sleep apnea-hypopnea syndrome risk at the end of pregnancy using the Berlin Questionnaire. *Gynecol Endocrinol official J Int Soc Gynecol Endocrinol* 2015;31(9):715–9.
- [44] Antony KM, Agrawal A, Arndt ME, Murphy AM, Alapat PM, Guntupalli KK, et al. Association of adverse perinatal outcomes with screening measures of obstructive sleep apnea. *J Perinatology* 2014;34(6):441–8.
- [45] O'Brien LM, Bullough AS, Chames MC, Shelgikar AV, Armitage R, Guilleminalt C, et al. Hypertension, snoring, and obstructive sleep apnoea during pregnancy: a cohort study. *BJOG Int J obstetrics Gynaecol* 2014;121(13):1685–93.
- [46] Pien GW, Pack AI, Jackson N, Maislin G, Macones GA, Schwab RJ. Risk factors for sleep-disordered breathing in pregnancy. *Thorax* 2014;69(4):371–7.
- [47] Gruca-Stryjak K, Cofta S, Wysocka E, Banaszewski J, Breborowicz GH. Obstructive sleep apnea in pregnancy. *Archives Perinat Med* 2013;19(4):223–8.
- [48] Reid J, Glew RA, Skomro R, Fenton M, Cotton D, Olatunbosun F, et al. Sleep disordered breathing and gestational hypertension: postpartum follow-up study. *Sleep* 2013;36(5):717–21.
- [49] Reid J, Taylor-Gjevne R, Gjevne J, Skomro R, Fenton M, Olatunbosun F, et al. Can gestational hypertension be modified by treating nocturnal airflow limitation? *J Clin Sleep Med* 2013;9(4):311–7.
- [50] O'Brien LM, Bullough AS, Owusu JT, Tremblay KA, Brincat CA, Chames MC, et al. Pregnancy-onset habitual snoring, gestational hypertension, and pre-eclampsia: prospective cohort study. *Am J Obstetrics Gynecol* 2012;207(6):487. e1–e9.
- [51] Reid J, Skomro R, Cotton D, Ward H, Olatunbosun F, Gjevne J, et al. Pregnant women with gestational hypertension may have a high frequency of sleep disordered breathing. *Sleep* 2011;34(8):1033–8.
- [52] Xu Z, Ye H, Li TP, Chen DJ, Liu HS, Gao CH. Clinical application of the Epworth sleepiness score in pregnant women with obstructive sleep apnea-hypopnea syndrome. *Nan fang yi ke da xue xue bao = J South Med Univ* 2009;29(9):1914–6.
- [53] Sahin FK, Koken G, Cosar E, Saylan F, Fidan F, Yilmazer M, et al. Obstructive sleep apnea in pregnancy and fetal outcome. *Int J Gynecol Obstetrics* 2008;100(2):141–6.
- [54] Yin TT, Williams N, Burton C, Ong SS, Loughna P, Britton JR, et al. Hypertension, fetal growth restriction and obstructive sleep apnoea in pregnancy. *Eur J Obstetrics Gynecol Reproductive Biol* 2008;141(1):35–8.
- [55] Guilleminalt C, Kreutzer M, Chang JL. Pregnancy, sleep disordered breathing and treatment with nasal continuous positive airway pressure. *Sleep Med* 2004;5(1):43–51.
- [56] Maasilta P, Bachour A, Teramo K, Polo O, Laitinen LA. Sleep-related disordered breathing during pregnancy in obese women. *Chest* 2001;120(5):1448–54.
- [57] Guilleminalt C, Querra-Salva M, Chowdhuri S, Poyares D. Normal pregnancy, daytime sleeping, snoring and blood pressure. *Sleep Med* 2000;1(4):289–97.
- [58] Chung F, Yegneswaran B, Liao P, Chung SA, Vairavanathan S, Islam S, et al. STOP questionnaire: a tool to screen patients for obstructive sleep apnea. *Anesthesiology* 2008;108(5):812–21.
- [59] Finkel KJ, Searleman AC, Tymkew H, Tanaka CY, Saager L, Safer-Zadeh E, et al. Prevalence of undiagnosed obstructive sleep apnea among adult surgical patients in an academic medical center. *Sleep Med* 2009;10(7):753–8.
- [60] Chung F, Yegneswaran B, Liao P, Chung SA, Vairavanathan S, Islam S, et al. Validation of the Berlin questionnaire and American Society of Anesthesiologists checklist as screening tools for obstructive sleep apnea in surgical patients. *Anesthesiology* 2008;108(5):822–30.
- [61] Maislin G, Pack AI, Kribbs NB, Smith PL, Schwartz AR, Kline LR, et al. A survey screen for prediction of apnea. *Sleep* 1995;18(3):158–66.
- [62] Flemons WW, Whitelaw WA, Brant R, Remmers JE. Likelihood ratios for a sleep apnea clinical prediction rule. *Am J Respir Crit Care Med* 1994;150(5 Pt 1):1279–85.
- [63] O'Brien LM, Bullough AS, Shelgikar AV, Chames MC, Armitage R, Chervin RD. Validation of watch-PAT-200 against polysomnography during pregnancy. *J Clin Sleep Med* 2012;8(3):287–94.
- [64] Whiting P, Rutjes AW, Reitsma JB, Glas AS, Bossuyt PM, Kleijnen J. Sources of variation and bias in studies of diagnostic accuracy: a systematic review. *Ann Intern Med* 2004;140(3):189–202.
- [65] Whiting PF, Rutjes AW, Westwood ME, Mallett S. A systematic review classifies sources of bias and variation in diagnostic test accuracy studies. *J Clin Epidemiol* 2013;66(10):1093–104.
- [66] Mulherin SA, Miller WC. Spectrum bias or spectrum effect? Subgroup variation in diagnostic test evaluation. *Ann Intern Med* 2002;137(7):598–602.
- [67] Naud K, Ouellet A, Brown C, Pasquier JC, Moutquin JM. Is sleep disturbed in pregnancy? *J Obstet Gynaecol Can* 2010;32(1):28–34.
- [68] Mindell JA, Cook RA, Nikolovski J. Sleep patterns and sleep disturbances across pregnancy. *Sleep Med* 2015;16(4):483–8.
- \*[69] Pien GW, Fife D, Pack AI, Nkwuo JE, Schwab RJ. Changes in symptoms of sleep-disordered breathing during pregnancy. *Sleep* 2005;28(10):1299–305.
- \*[70] Bourjeily G, Raker C, Chalhouh M, Miller M. Excessive daytime sleepiness in late pregnancy may not always be normal: results from a cross-sectional study. *Sleep Breath* 2013;17(2):735–40.
- [71] Bourjeily G, El Sabbagh R, Sawan P, Raker C, Wang C, Hott B, et al. Epworth sleepiness scale scores and adverse pregnancy outcomes. *Sleep Breath* 2013;17(4):1179–86.
- [72] Luo J, Huang R, Zhong X, Xiao Y, Zhou J. STOP-Bang questionnaire is superior to Epworth sleepiness scales, Berlin questionnaire, and STOP questionnaire in screening obstructive sleep apnea hypopnea syndrome patients. *Chin Med J* 2014;127(17):3065–70.
- [73] Osman EZ, Osborne J, Hill PD, Lee BW. The Epworth sleepiness scale: can it be used for sleep apnoea screening among snorers? *Clin Otolaryngol Allied Sci* 1999;24(3):239–41.
- [74] Hayley AC, Williams LJ, Berk M, Kennedy GA, Jacka FN, Pasco JA. The relationship between excessive daytime sleepiness and depressive and anxiety disorders in women. *Aust N Z J Psychiatry* 2013;47(8):772–8.
- [75] Jaussent I, Bouyer J, Ancelin ML, Akbaraly T, Peres K, Ritchie K, et al. Insomnia and daytime sleepiness are risk factors for depressive symptoms in the elderly. *Sleep* 2011;34(8):1103–10.
- [76] Sarberg M, Bladh M, Svanborg E, Josefsson A. Postpartum depressive symptoms and its association to daytime sleepiness and restless legs during pregnancy. *BMC Pregnancy Childbirth* 2016;16(1):137.
- [77] Chung F, Abdullah HR, Liao P. STOP-Bang Questionnaire: a practical approach to screen for obstructive sleep apnea. *Chest* 2016;149(3):631–8.
- [78] Abdullah HR, Nagappa M, Siddiqui N, Chung F. Diagnosis and treatment of obstructive sleep apnea during pregnancy. *Curr Opin Anaesthesiol* 2016;29(3):317–24.
- [79] Bourjeily G, Fung JY, Sharkey KM, Walia P, Kao M, Moore R, et al. Airflow limitations in pregnant women suspected of sleep-disordered breathing. *Sleep Med* 2014;15(5):550–5.
- [80] Hudgel DW, Lamerato LE, Jacobsen GR, Drake CL. Assessment of multiple health risks in a single obstructive sleep apnea population. *J Clin Sleep Med JCSM Official Publ Am Acad Sleep Med* 2012;8(1):9–18.
- [81] Chowdhuri S, Quan SF, Almeida F, Ayappa I, Batool-Anwar S, Budhiraja R, et al. An official American Thoracic society research statement: impact of mild obstructive sleep apnea in adults. *Am J Respir Crit Care Med* 2016;193(9):e37–54.